



Golden Gate University

SF Remodel Project - Utilization and Occupancy, part II | **04.30.12**

MKTHINK

April 30th Meeting Agenda

- **Assessment of Utilization and Occupancy, part II**
- **Future Needs** - review boundaries (existing envelope, etc.) and determine best methods for gathering information
- **Project Objective Teams** - confirm composition of teams for Objectives 4-6
- **Housekeeping**
 - Board of Trustees Facilities Task Force (FTF) meeting is scheduled for next week (5/7)
 - Bob and Mike will attend; others have the week off
 - Confirm agenda
 - Following week (5/14): Objective 4 - University Library Kick-Off. Make sure that key team members are able to attend.

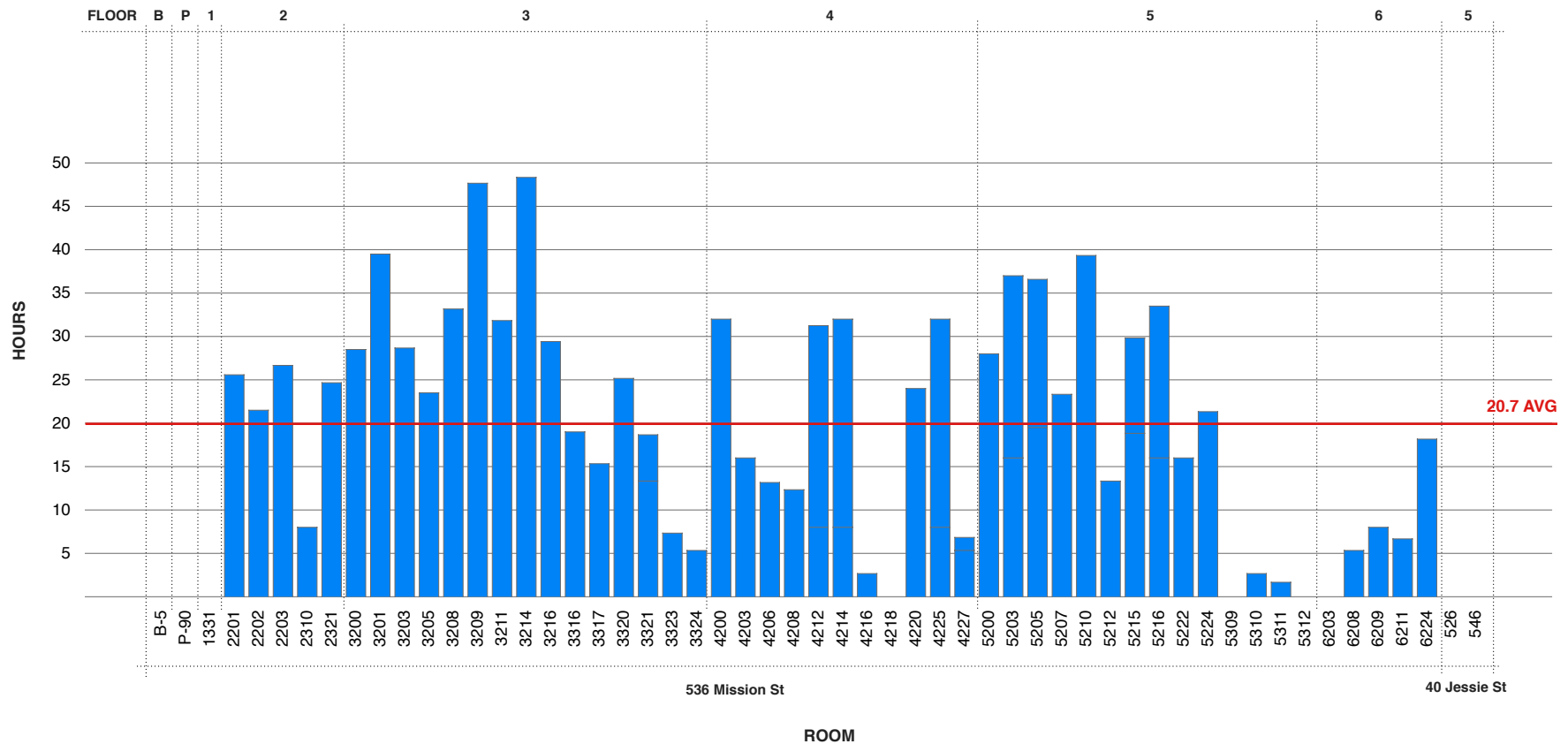
Assessment: Utilization and Occupancy

I. UTILIZATION

Assessment: Utilization

Weekly Room Use (All Classes) - Spring 2012

- 50 Rooms in inventory
- Average Room Use: 20.7 hours/week
- Total Room Use: 1,033.5 hours/week

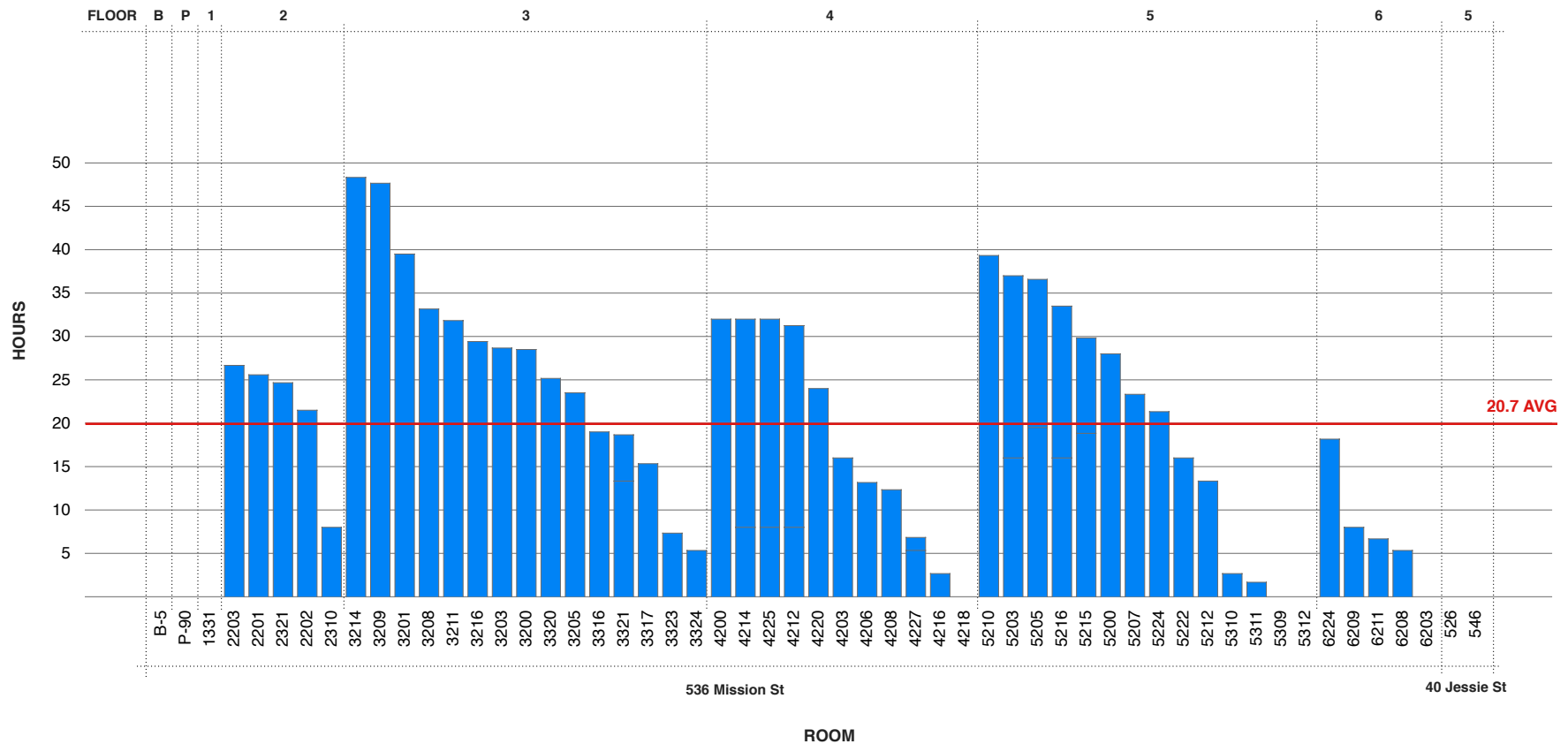


proprietary and confidential

Assessment: Utilization

Weekly Room Use (All Classes) - Spring 2012

- 50 Rooms in inventory
- Average Room Use: 20.7 hours/week
- Total Room Use: 1,033.5 hours/week

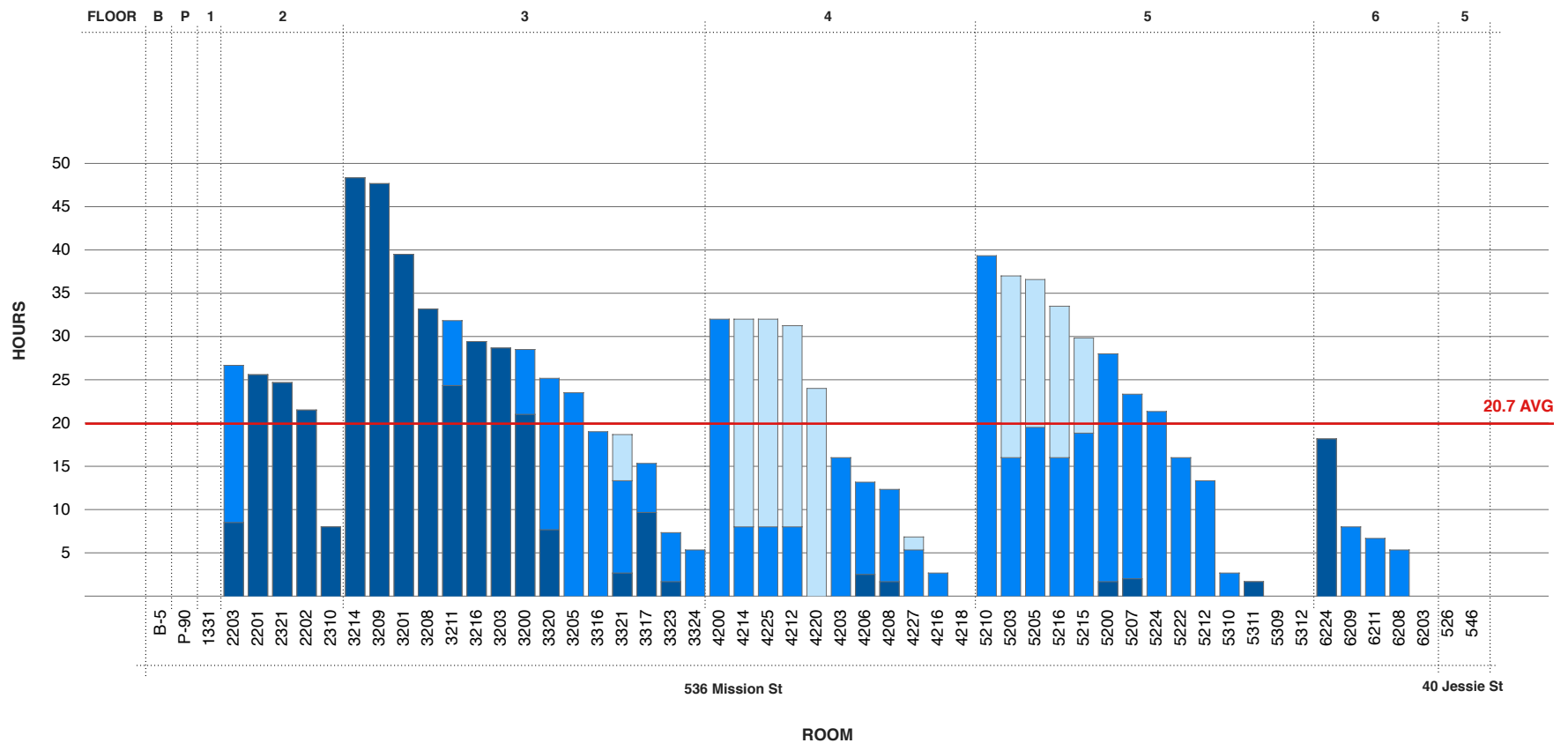
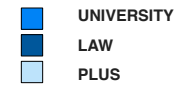


proprietary and confidential

Assessment: Utilization

Weekly Room Use (All Classes) - Spring 2012

- PLUS Room Use: 168.7 hours/week
- Law Room Use: 412.3 hours/week
- Rest of University: 452.5 hours/week
- Total Weekly Room Use: **1,033.5 hours/week**

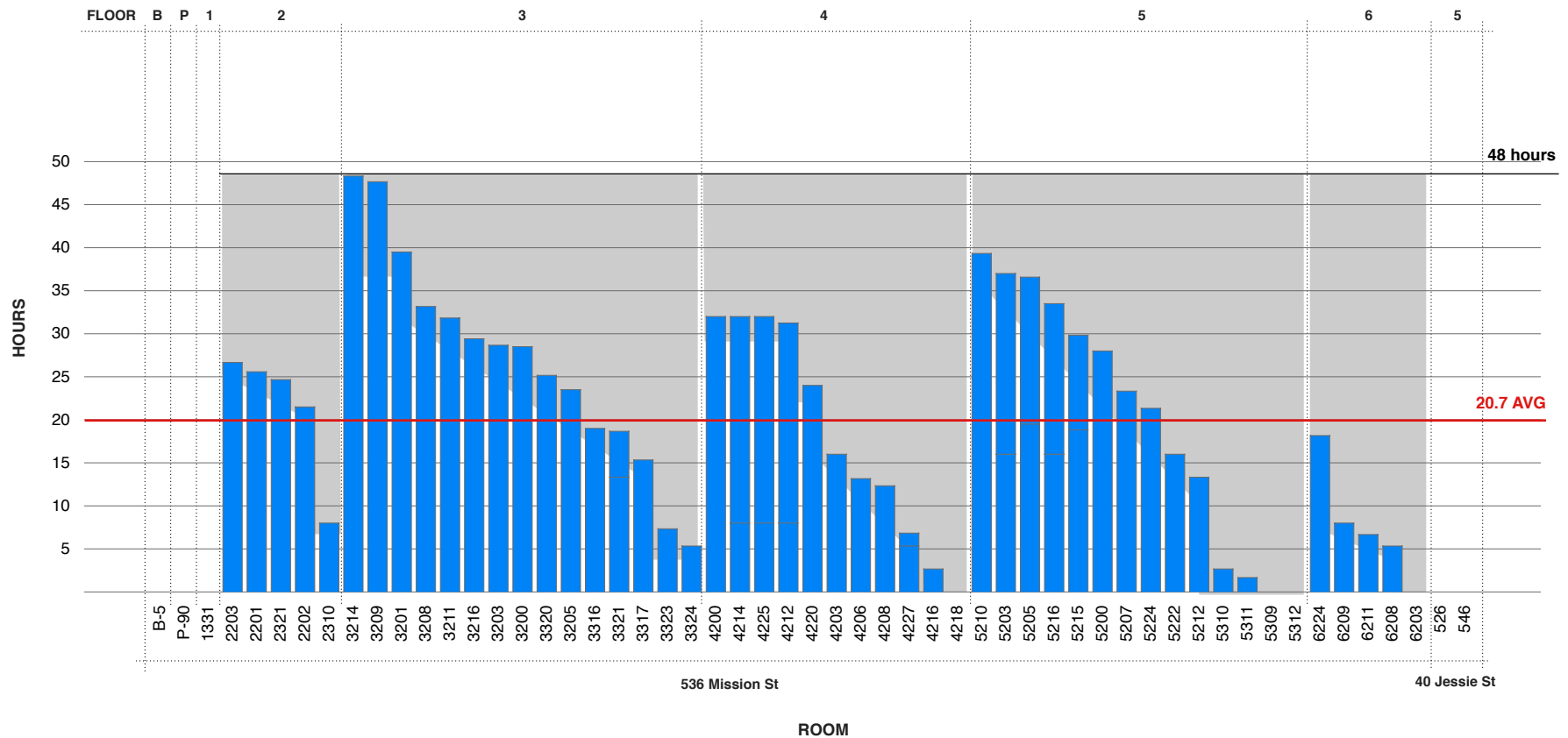


proprietary and confidential

Assessment: Utilization

Weekly Room Use (All Classes) - Spring 2012

- 50 Rooms in inventory
- Average Room Use: 20.7 hours/week
- Total Room Use: 1,033.5 hours/week
- Available Room Use: **1,366.5 hours/week**

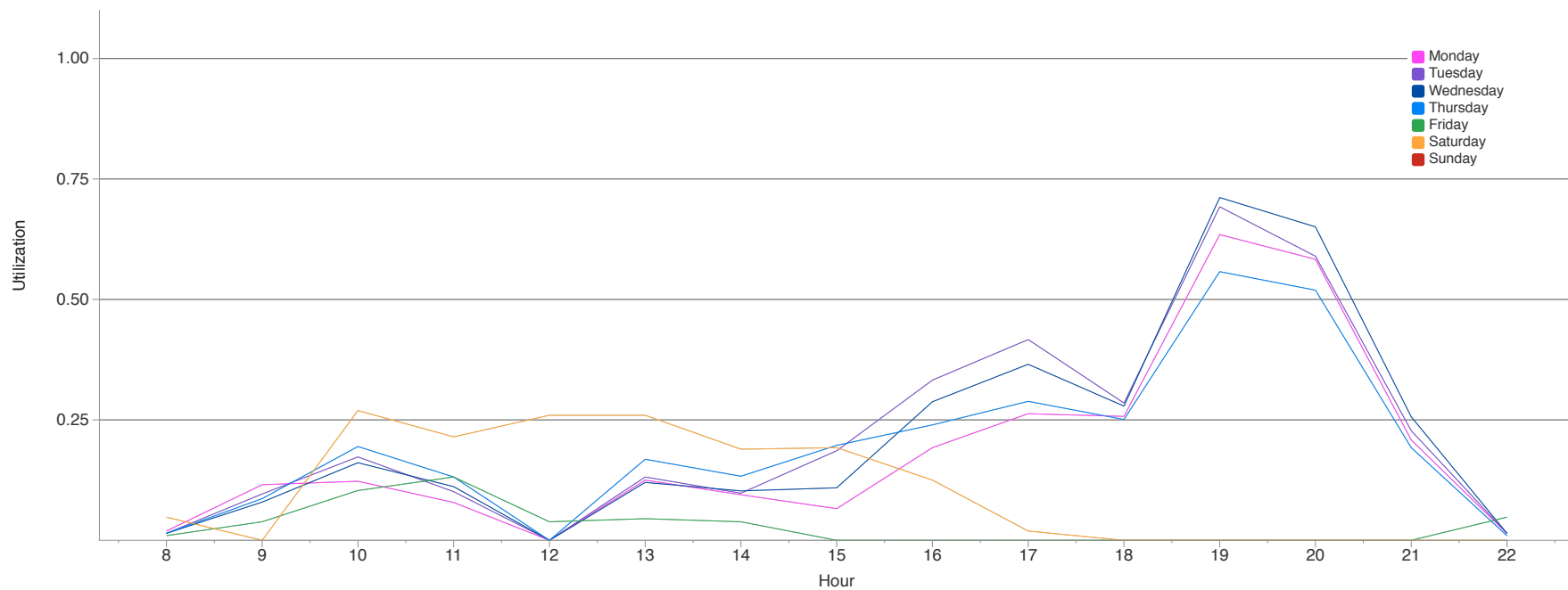


proprietary and confidential

Assessment: Utilization

Daily Room Utilization by Hour (Classes Only) - Spring 2012

- Peak usage only during evening hours (approx. 2 hrs/day)
- At peak, total utilization of instructional spaces is still below 75%
- Balanced load during day hours

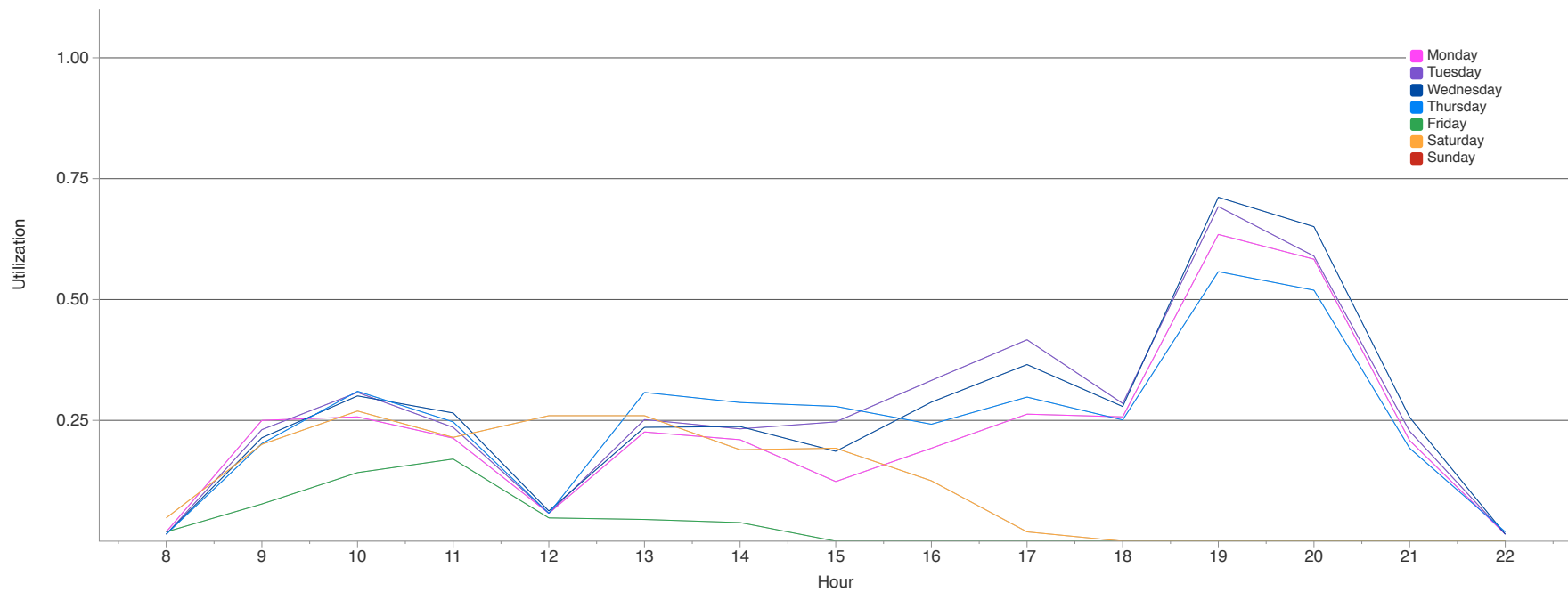


proprietary and confidential

Assessment: Utilization

Daily Room Utilization by Hour (Classes and PLUS) - Spring 2012

- Peak usage only during evening hours (approx. 2 hrs/day)
- At peak, total utilization of instructional spaces is still below 75%
- Balanced load during day hours, approx. 25% utilization

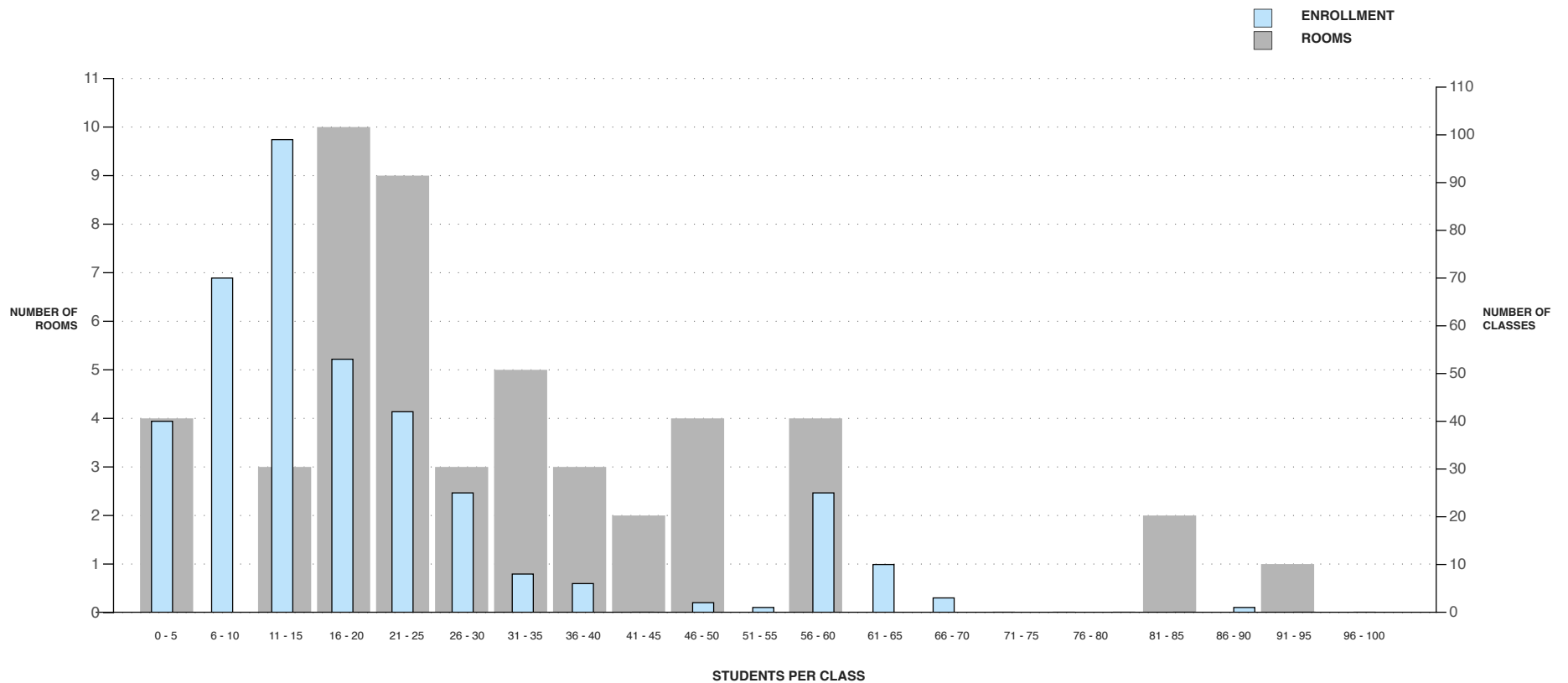


proprietary and confidential

Assessment: Occupancy

Distribution of Room Sizes and Class Sizes Spring 2012

- Median Room Size: 24 seats
- Median Class Size: 13 students

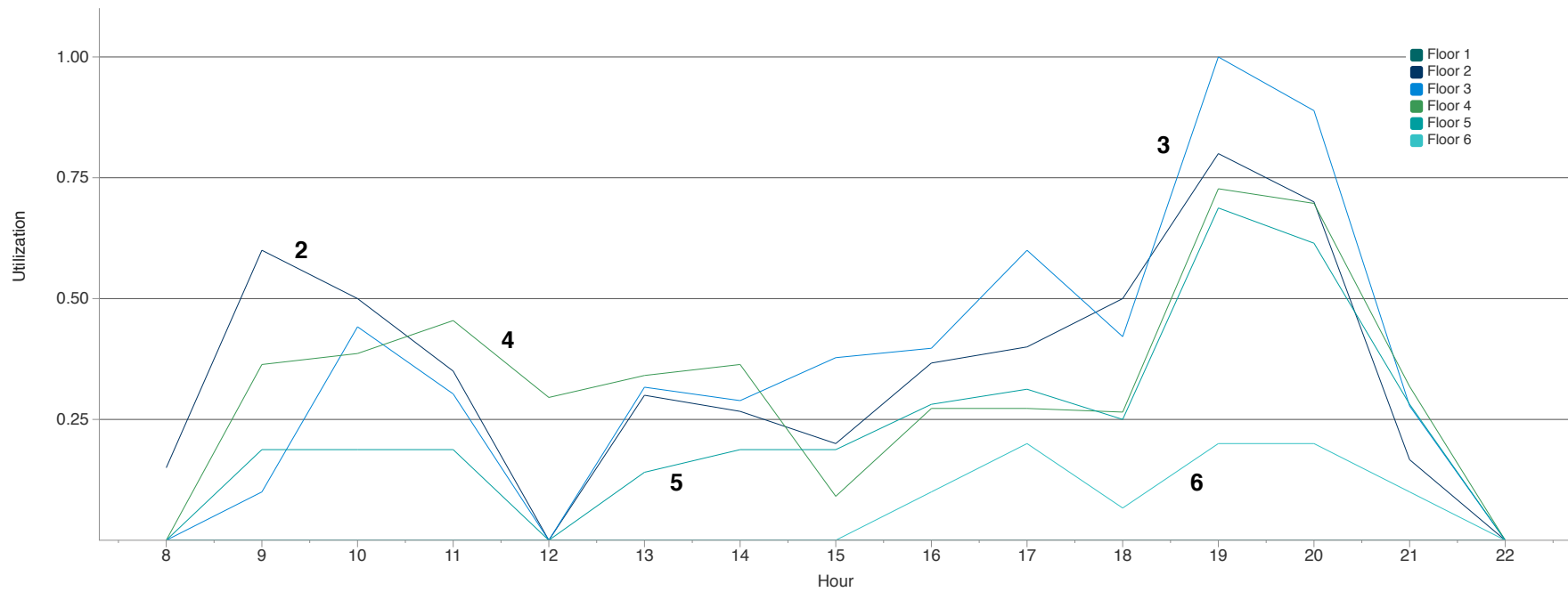


proprietary and confidential

Assessment: Utilization

Daily Room Utilization by Floor (Classes Only) - Spring 2012

- 2nd and 3rd floors exhibit short periods of higher utilization

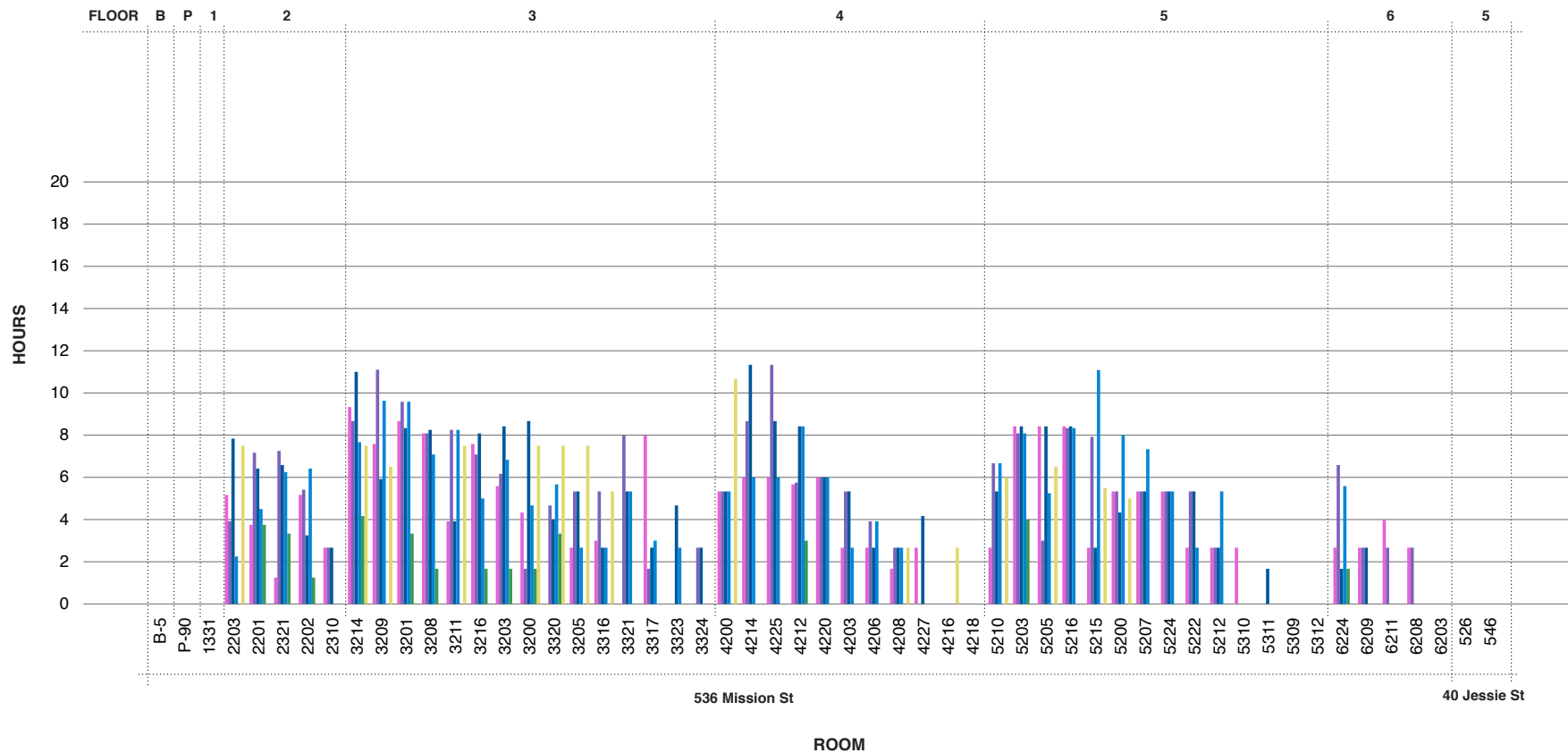


proprietary and confidential

Assessment: Utilization

Weekly Room Use (Classes Only) - Spring 2012

- Daily schedule creates high variability in use by day of week

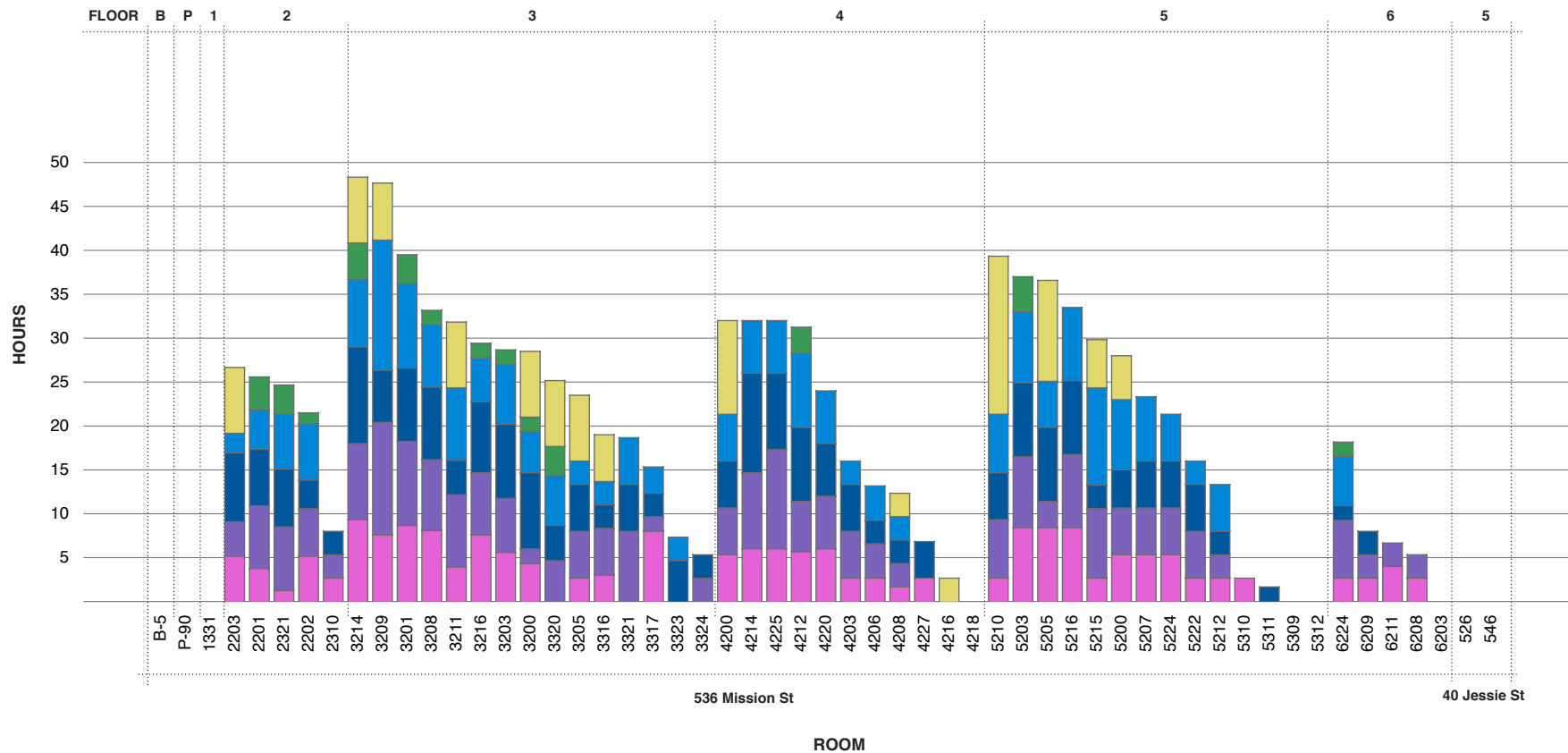
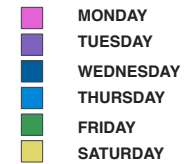


proprietary and confidential

Assessment: Utilization

Weekly Room Use (Classes Only) - Spring 2012

- Every floor has a wide range of high and low room utilization
- Opportunity to reconfigure underutilized and underoccupied instructional spaces

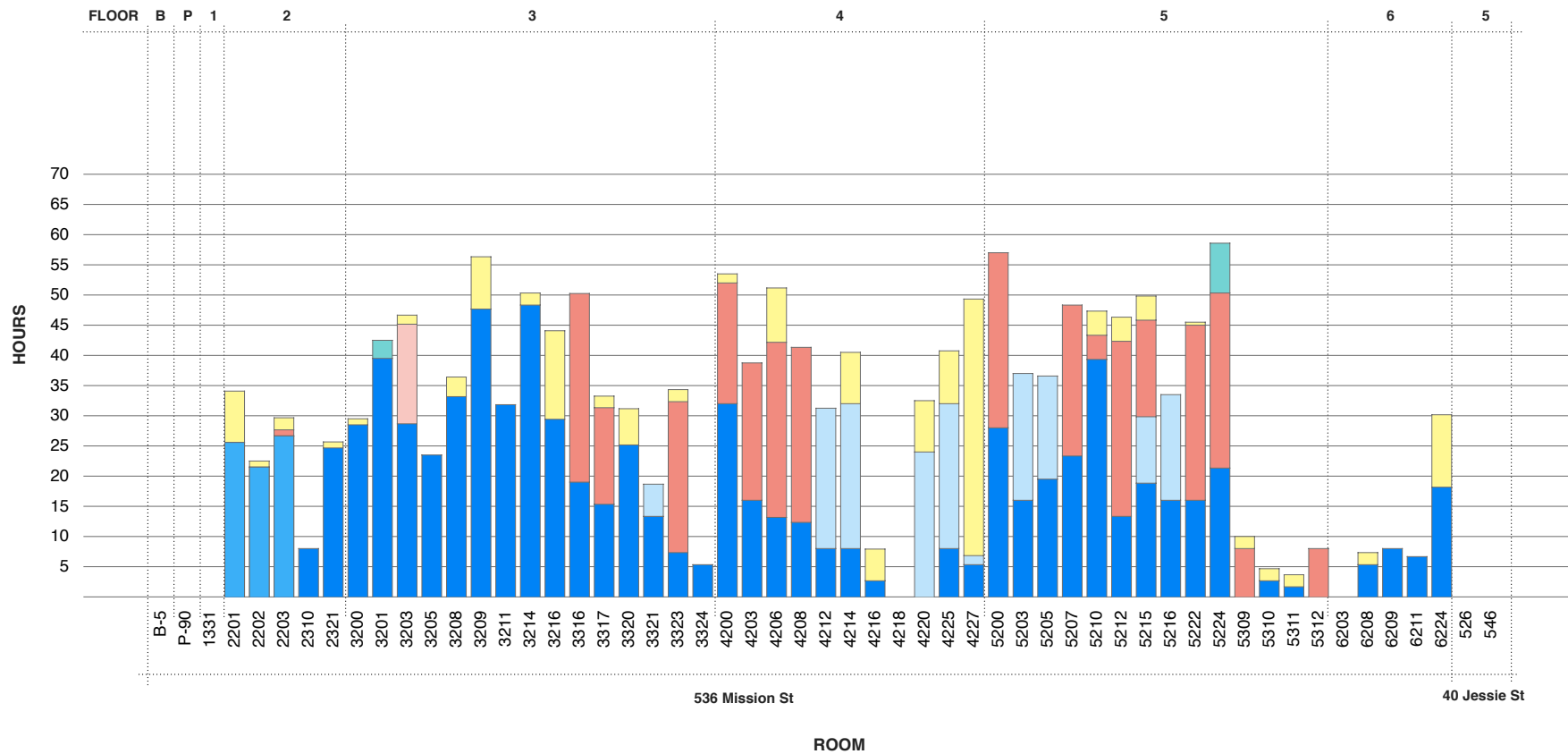
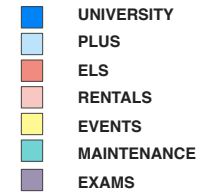


proprietary and confidential

Assessment: Utilization

Total Weekly Room Use - 1/9/12 to 1/14/12

- Heavy Week (beginning of term)
- Least utilized rooms for class generally being filled by ELS, events, rentals

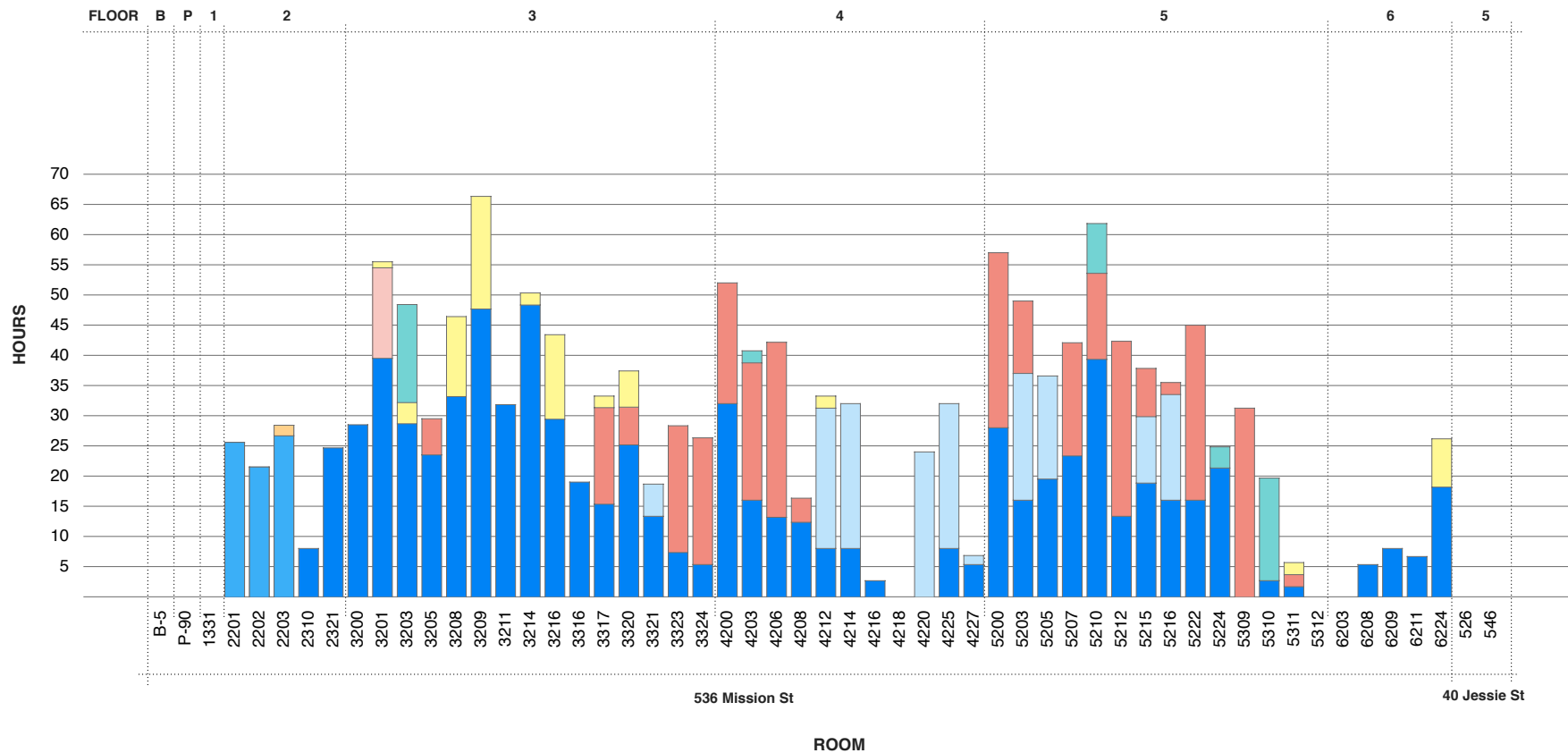
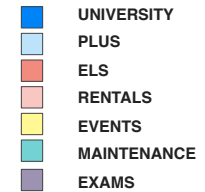


proprietary and confidential

Assessment: Utilization

Total Weekly Room Use - 2/6/12 to 2/12/12

- Light Week (quarter through the term)
- Least utilized rooms for class generally being filled by ELS, events, rentals
- Fewer events scheduled, higher maintenance

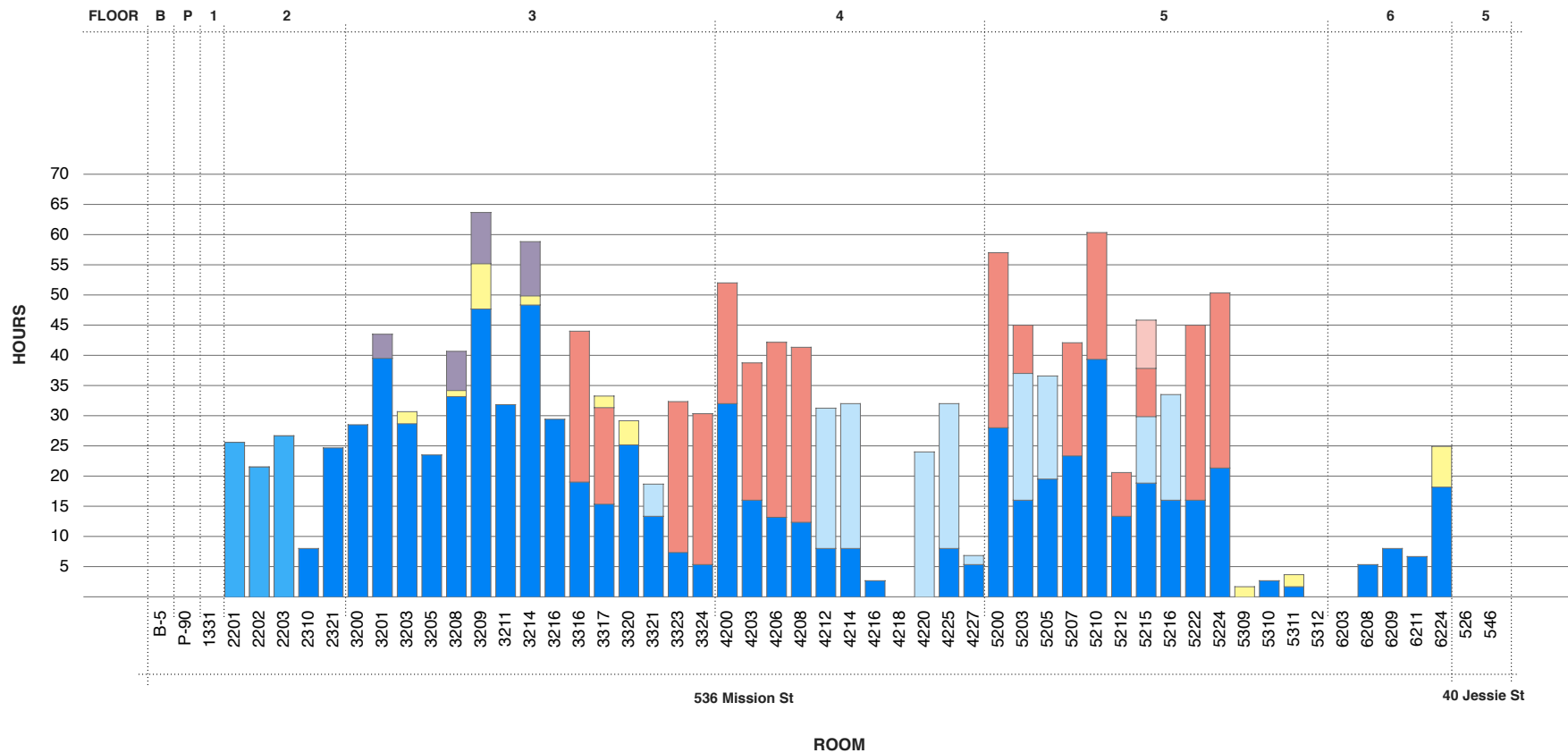
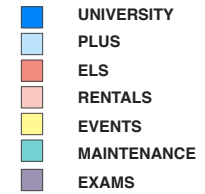


proprietary and confidential

Assessment: Utilization

Total Weekly Room Use - 2/27/12 to 3/3/12

- Midterm/Test Week (halfway through term)
- Least utilized rooms for class generally being filled by ELS, events, rentals

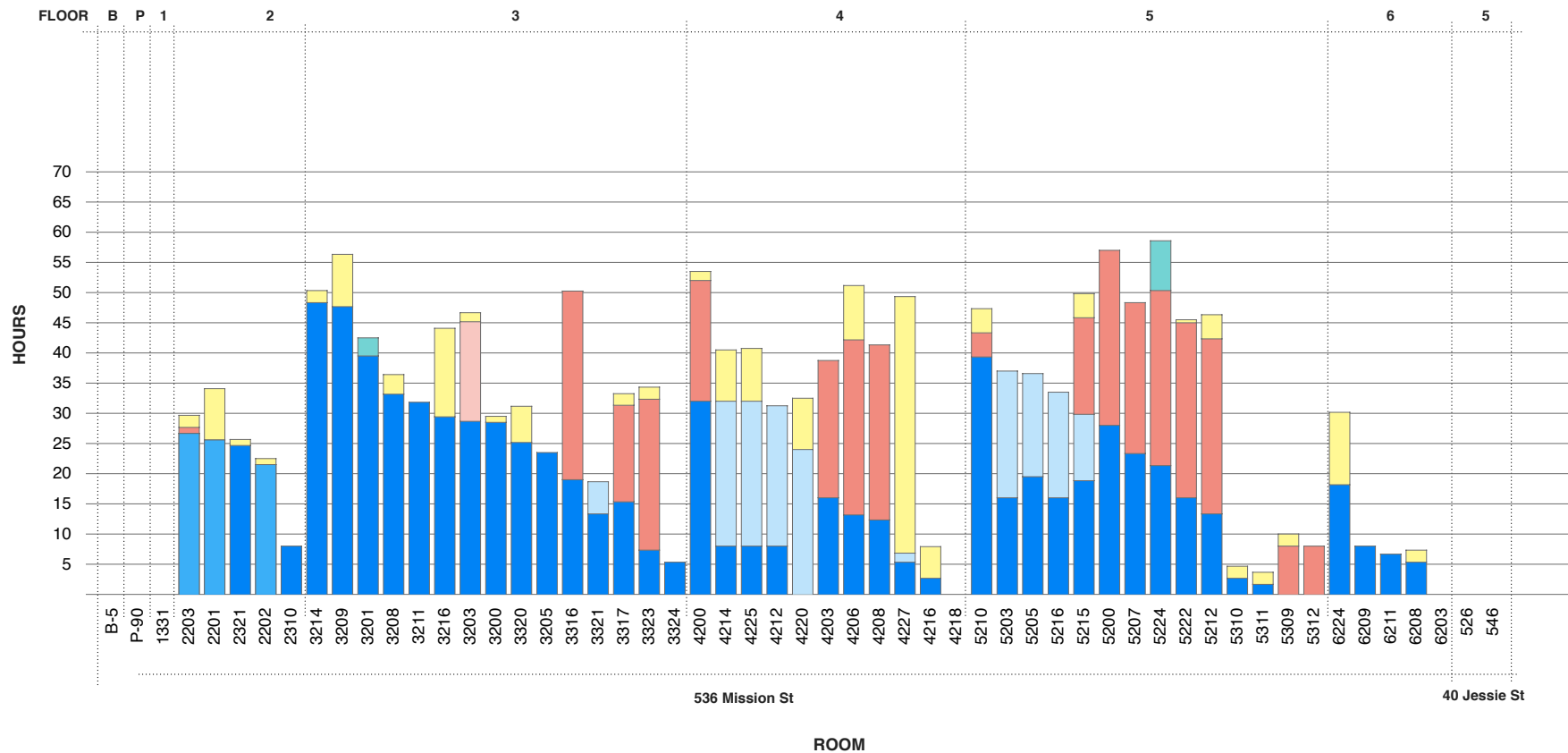
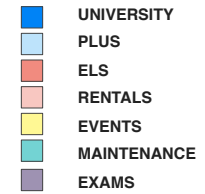


proprietary and confidential

Assessment: Utilization

Total Weekly Room Use - 1/9/12 to 1/14/12

- Heavy Week (beginning of term)
- Least utilized rooms for class generally being filled by ELS, events, rentals

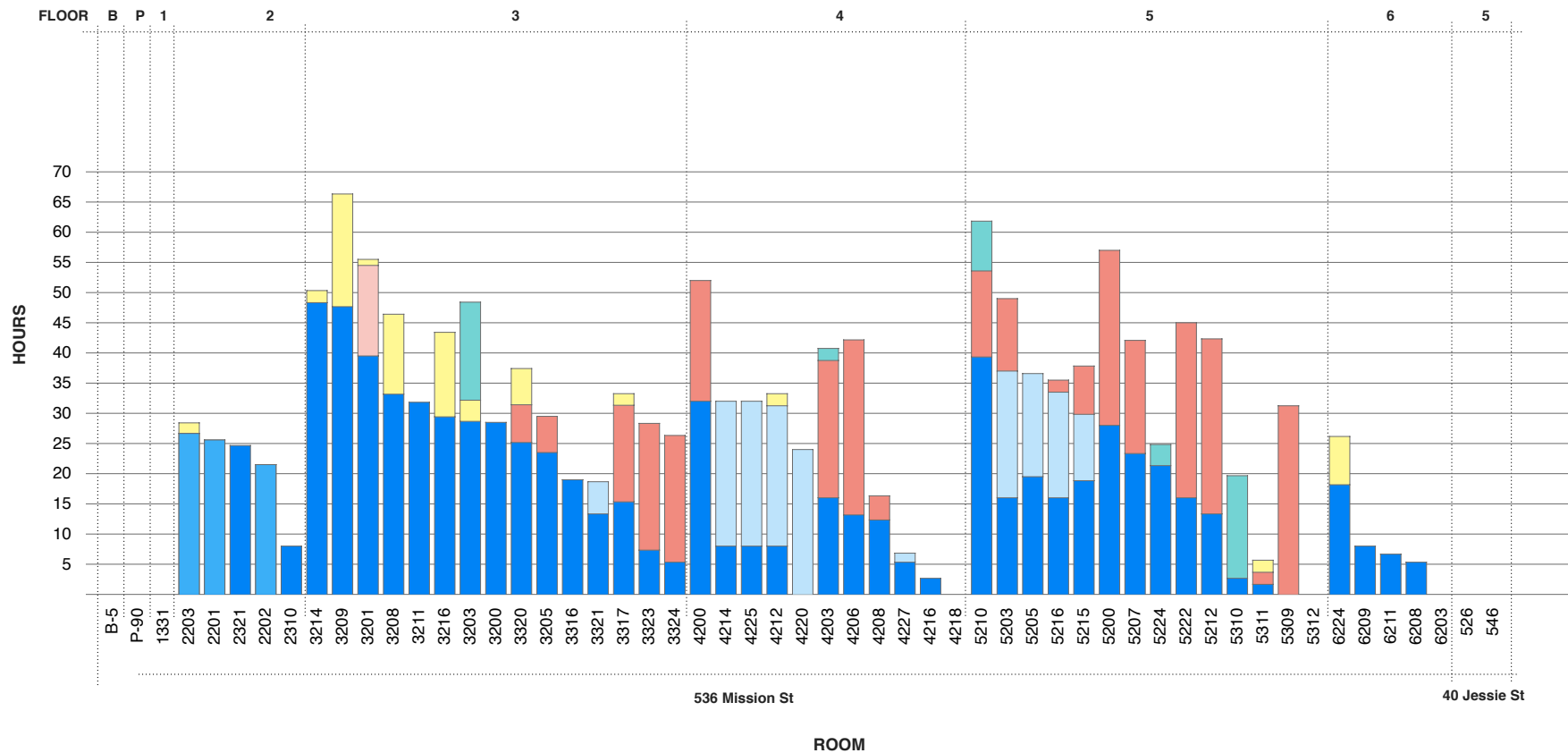
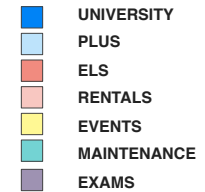


proprietary and confidential

Assessment: Utilization

Total Weekly Room Use - 2/6/12 to 2/12/12

- Light Week (quarter through the term)
- Least utilized rooms for class generally being filled by ELS, events, rentals
- Less events scheduled, higher maintenance

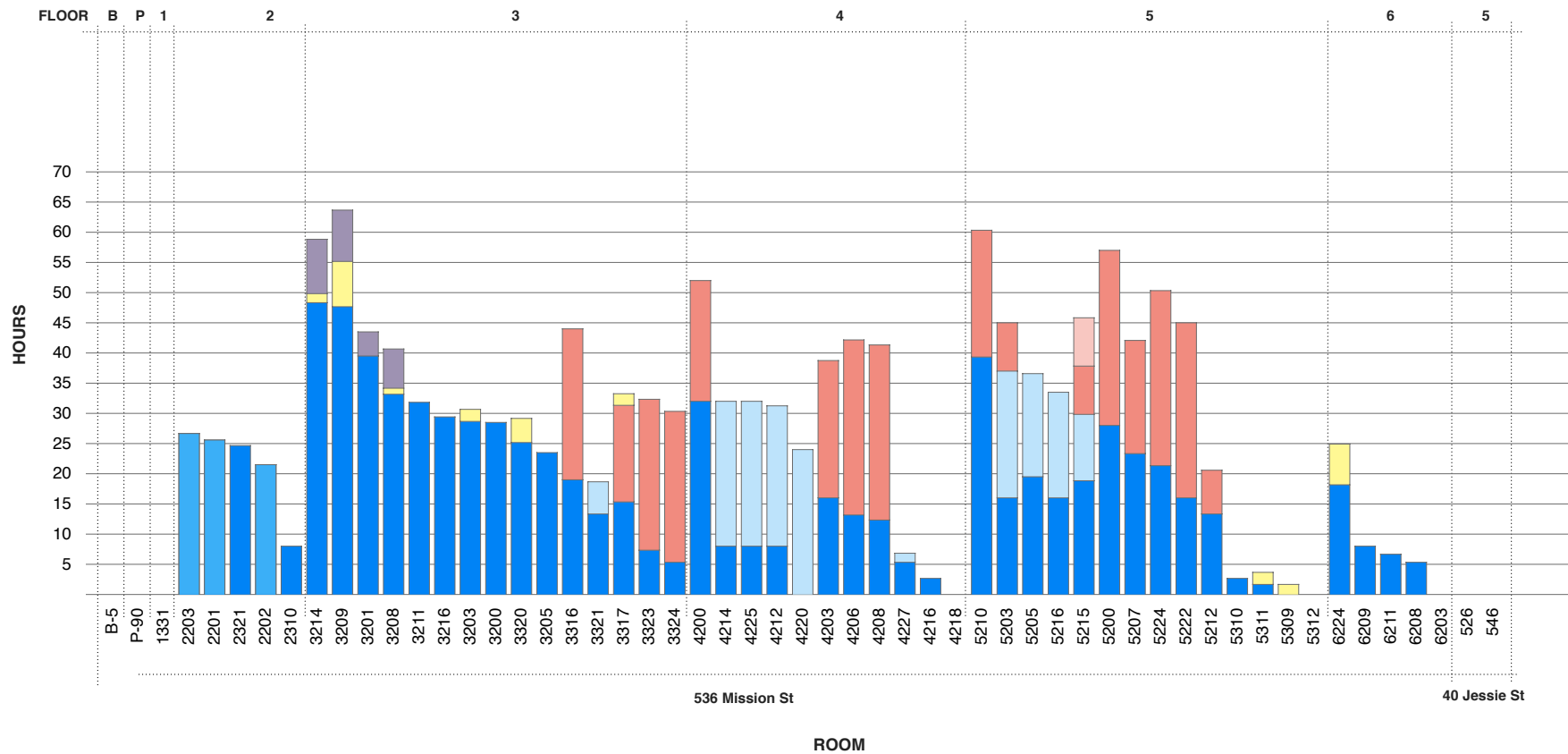
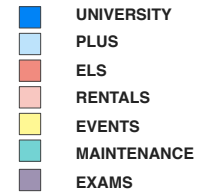


proprietary and confidential

Assessment: Utilization

Weekly Room Use (Classes Only) - 2/27/12 to 3/3/12

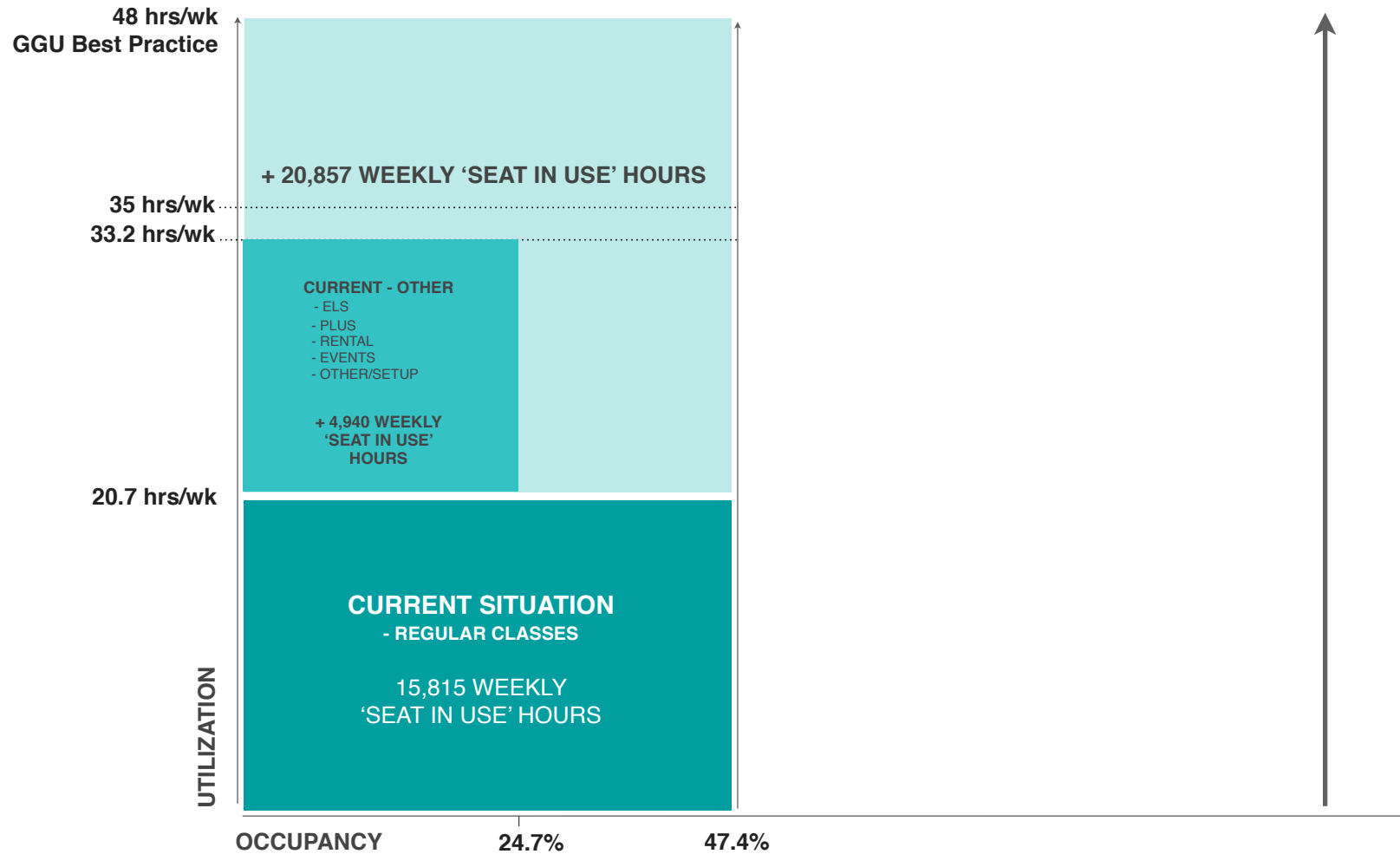
- Midterm/Test Week (halfway through term)
- Least utilized rooms for class generally being filled by ELS, events, rentals



proprietary and confidential

Assessment: Increase Utilization Scenarios

Current Instructional Spaces could be maximized to provide...



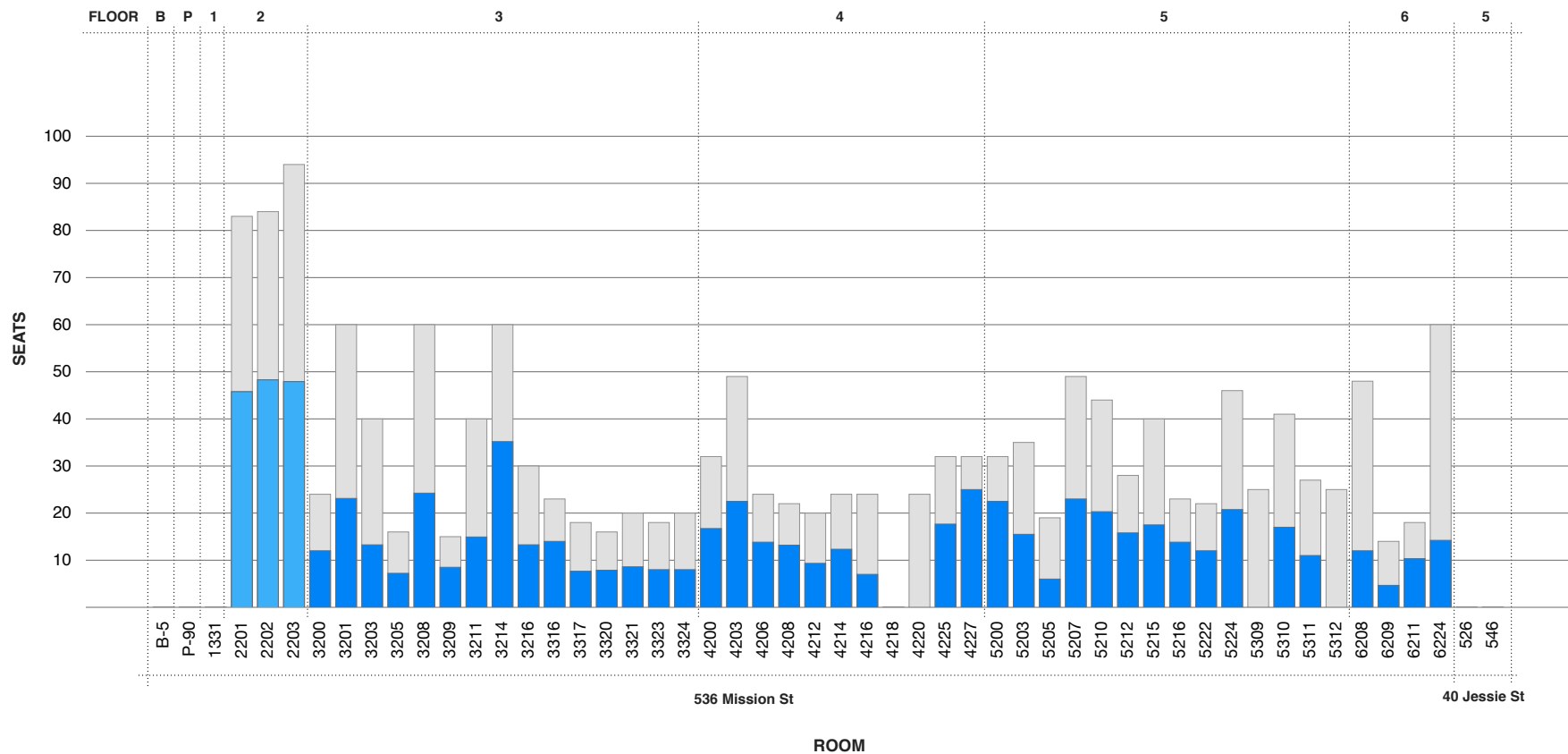
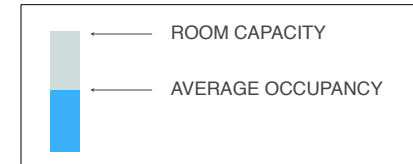
proprietary and confidential

II. OCCUPANCY

Assessment: Occupancy

Instructional Space Occupancy (Classes Only) - Spring 2012

- Room capacities are distributed fairly evenly across floors (Lecture halls on 2nd floor have the highest)
- Average occupancy of classes is 47.4%

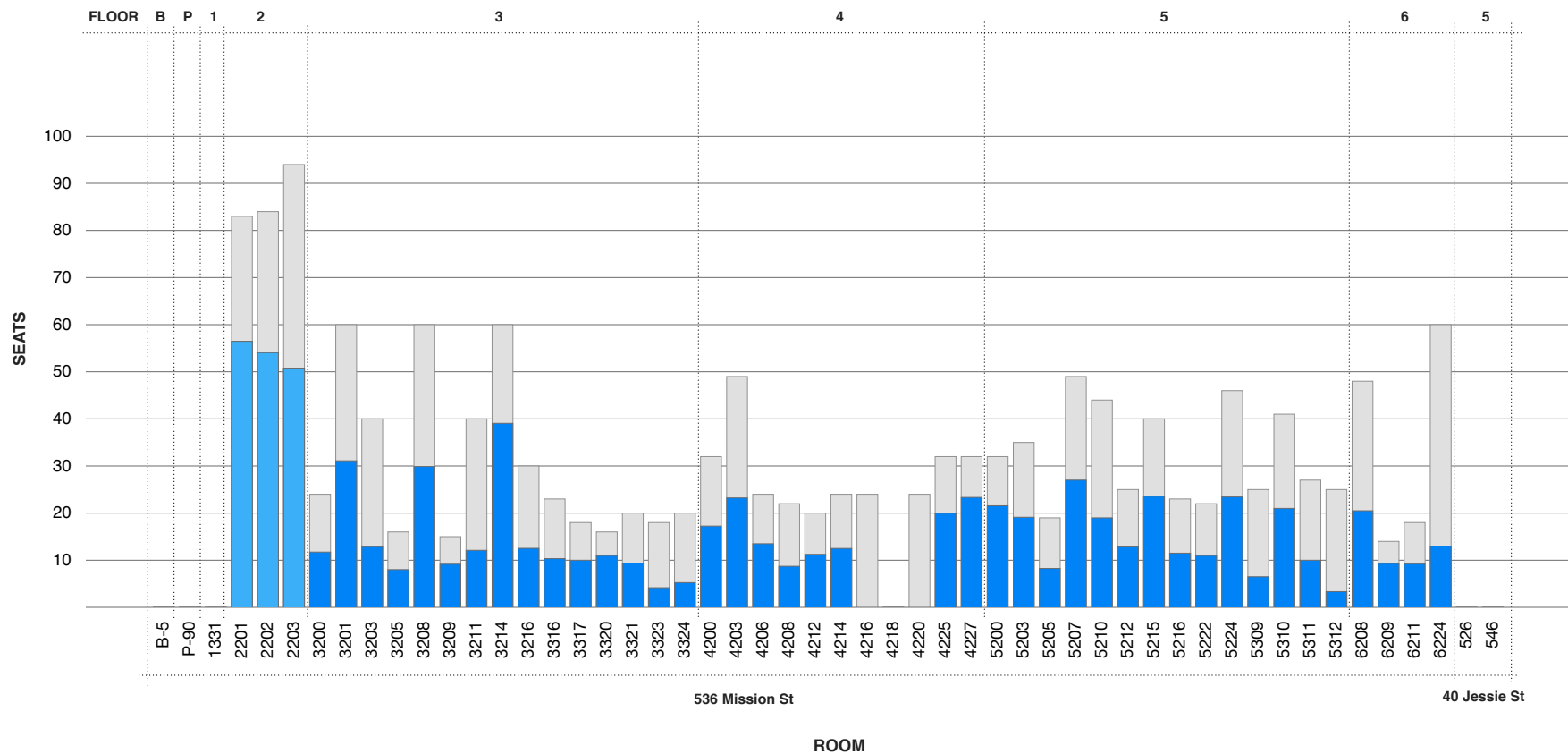
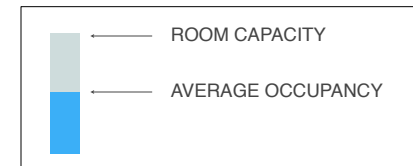


proprietary and confidential

Assessment: Occupancy

Instructional Space Occupancy (Classes Only) - Fall 2011

- Room capacities are distributed fairly evenly across floors (Lecture halls on 2nd floor have the highest)
- Average occupancy of classes is 50.1%

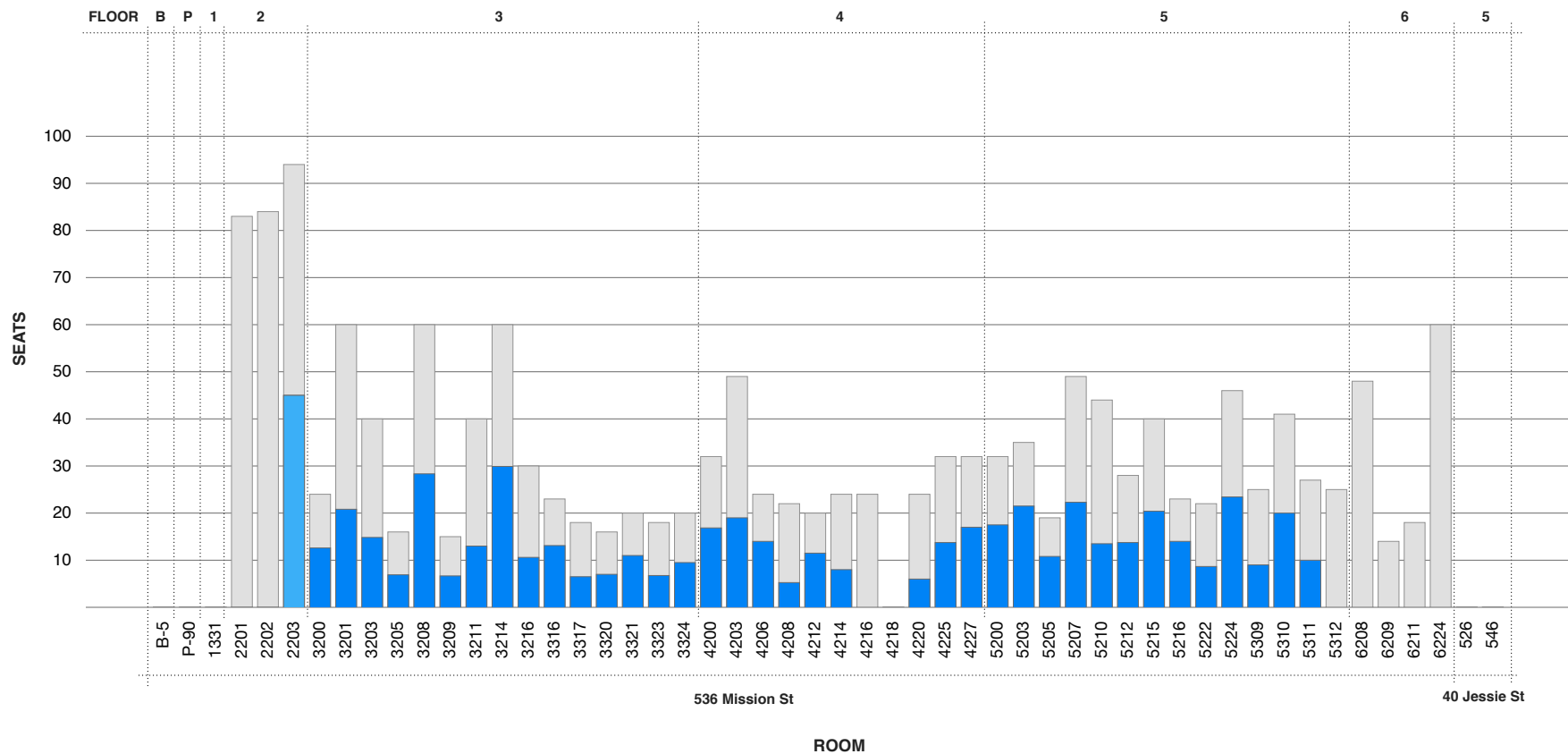
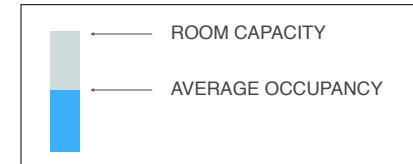


proprietary and confidential

Assessment: Occupancy

Instructional Space Occupancy (Classes Only) - Summer 2011

- Room capacities are distributed fairly evenly across floors (Lecture halls on 2nd floor have the highest)
- Average occupancy of classes is 44.9%

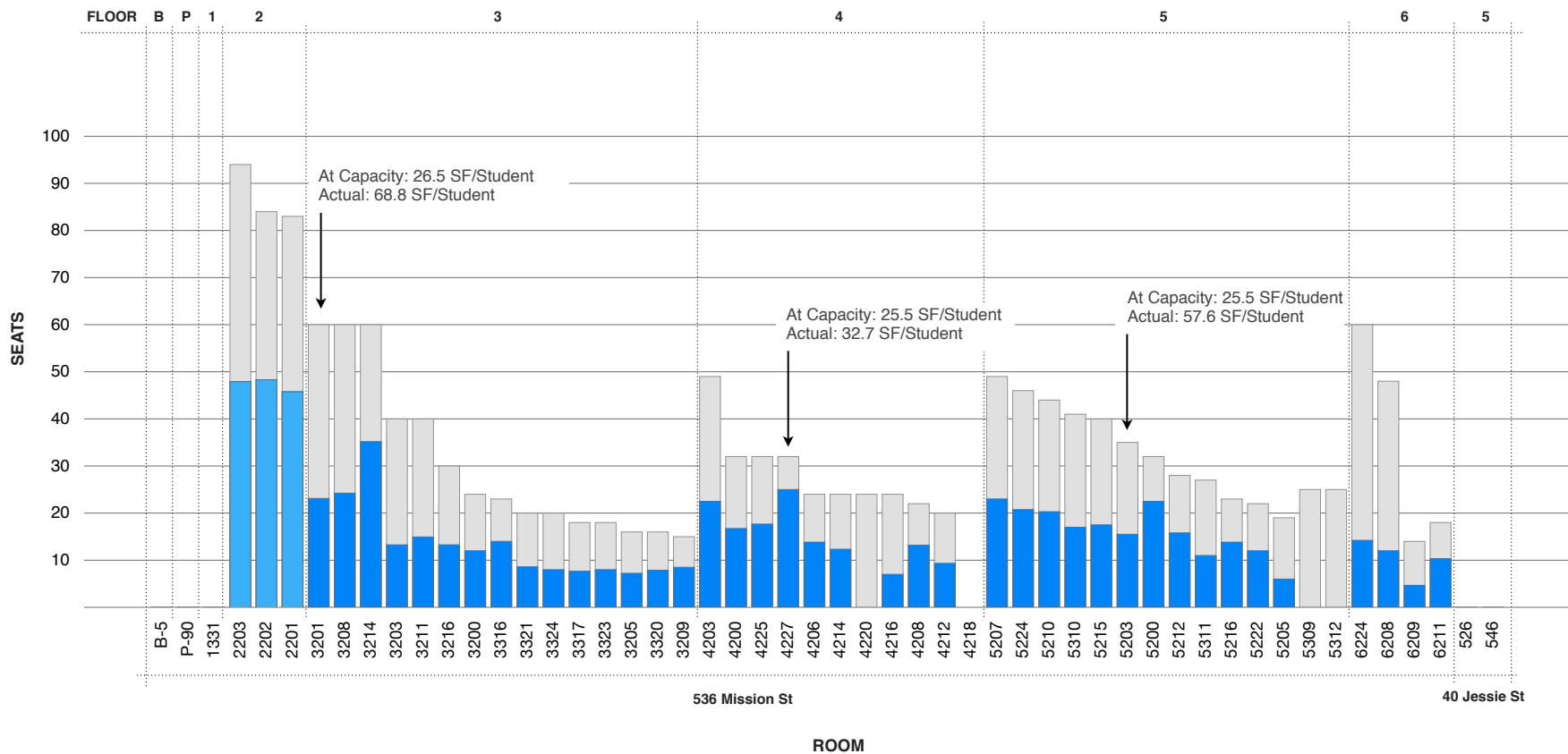
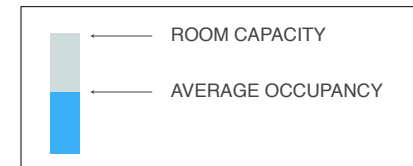


proprietary and confidential

Assessment: Occupancy

Instructional Space Occupancy (Classes Only) - Spring 2012

- Average capacity SF/Student is 25.7 SF/Student
- Average enrolled SF/Student is approximately 54.3 SF/Student

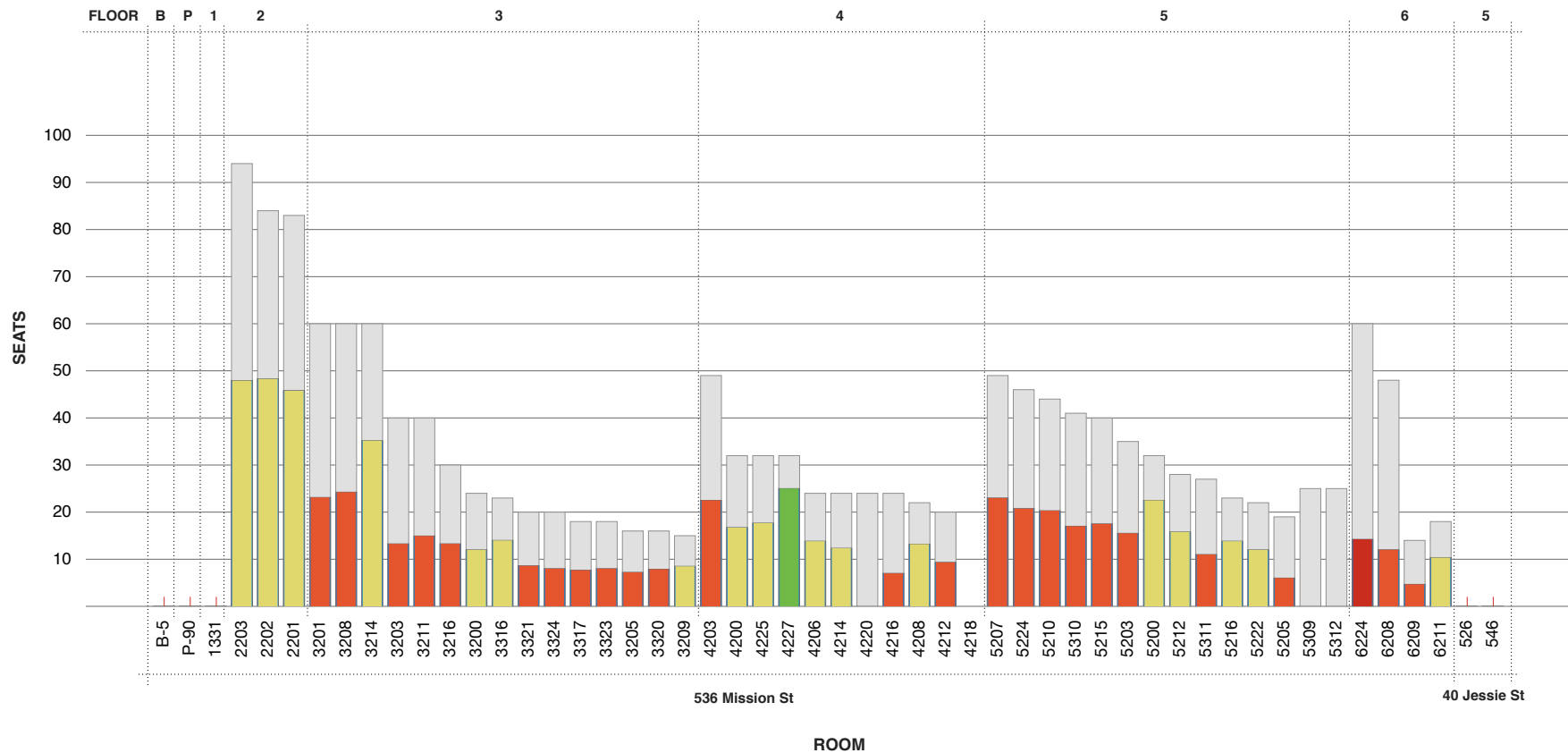
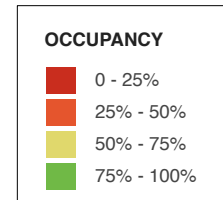


proprietary and confidential

Assessment: Occupancy

Instructional Space Occupancy (Classes Only) - Spring 2012

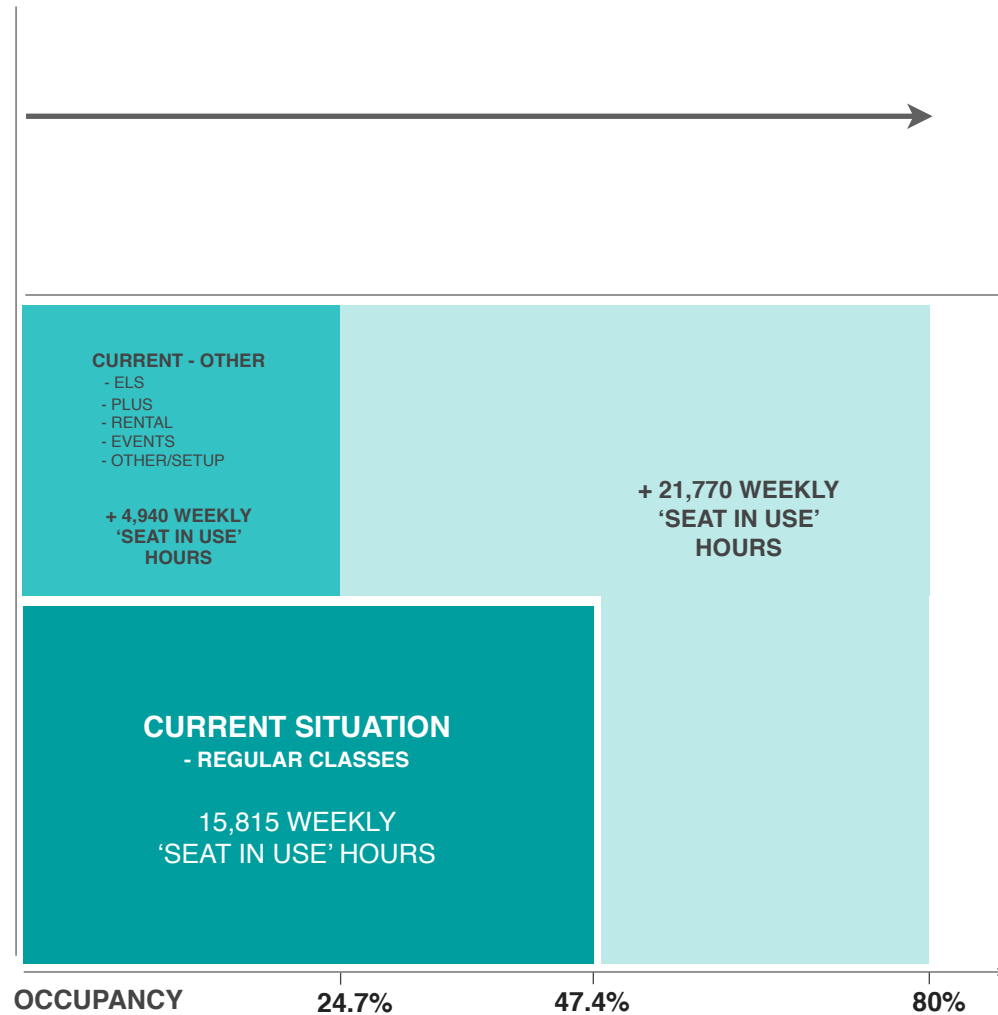
- Low occupancy classrooms distributed among all of the floors



proprietary and confidential

Assessment: Improve Occupancy Scenarios

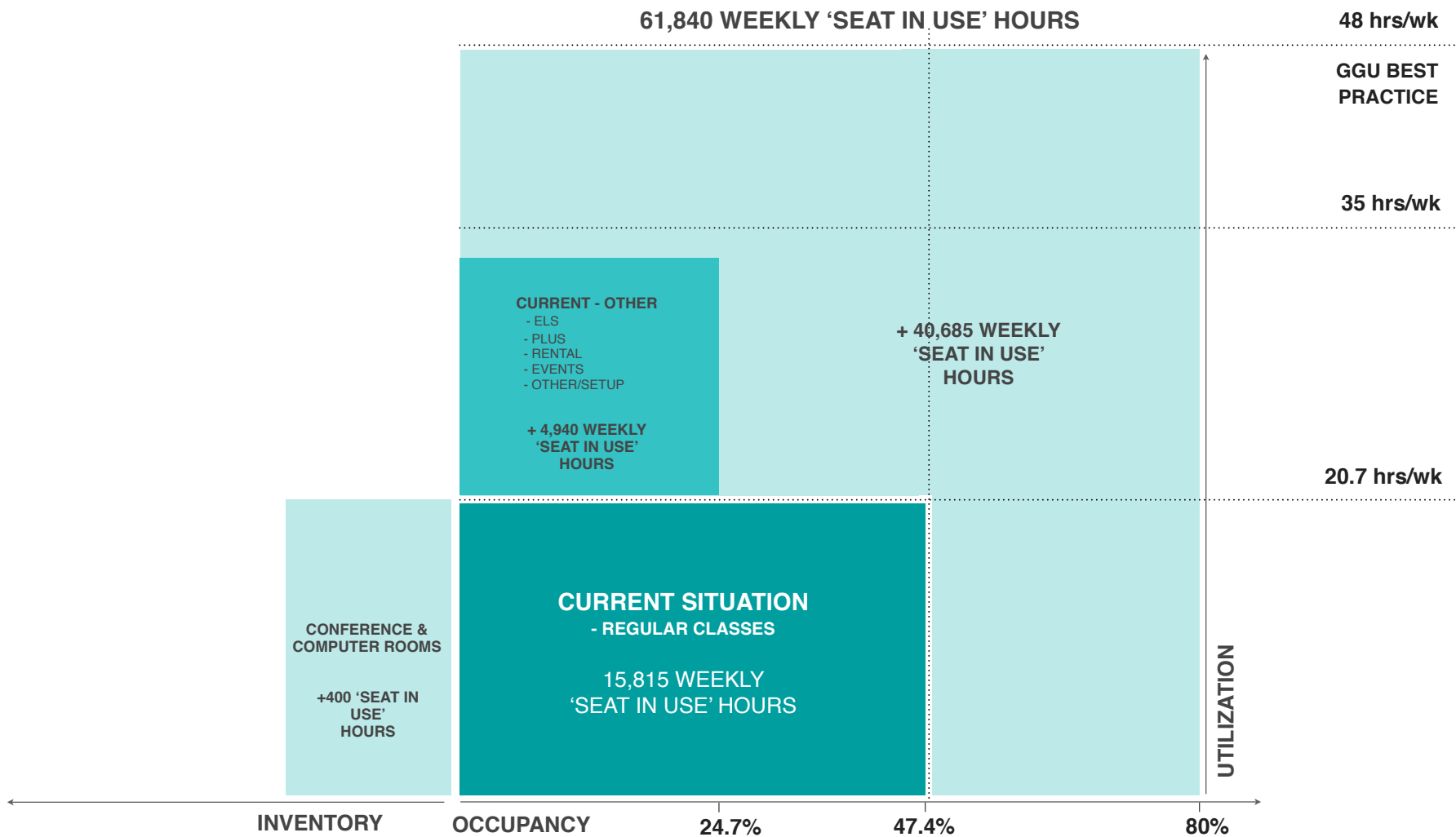
Current Instructional Spaces could be maximized to provide...



proprietary and confidential

Assessment: Improve Occupancy Scenarios

Current Instructional Spaces could be maximized to provide...



proprietary and confidential