

Allendale Elementary School

3670 Penniman Avenue

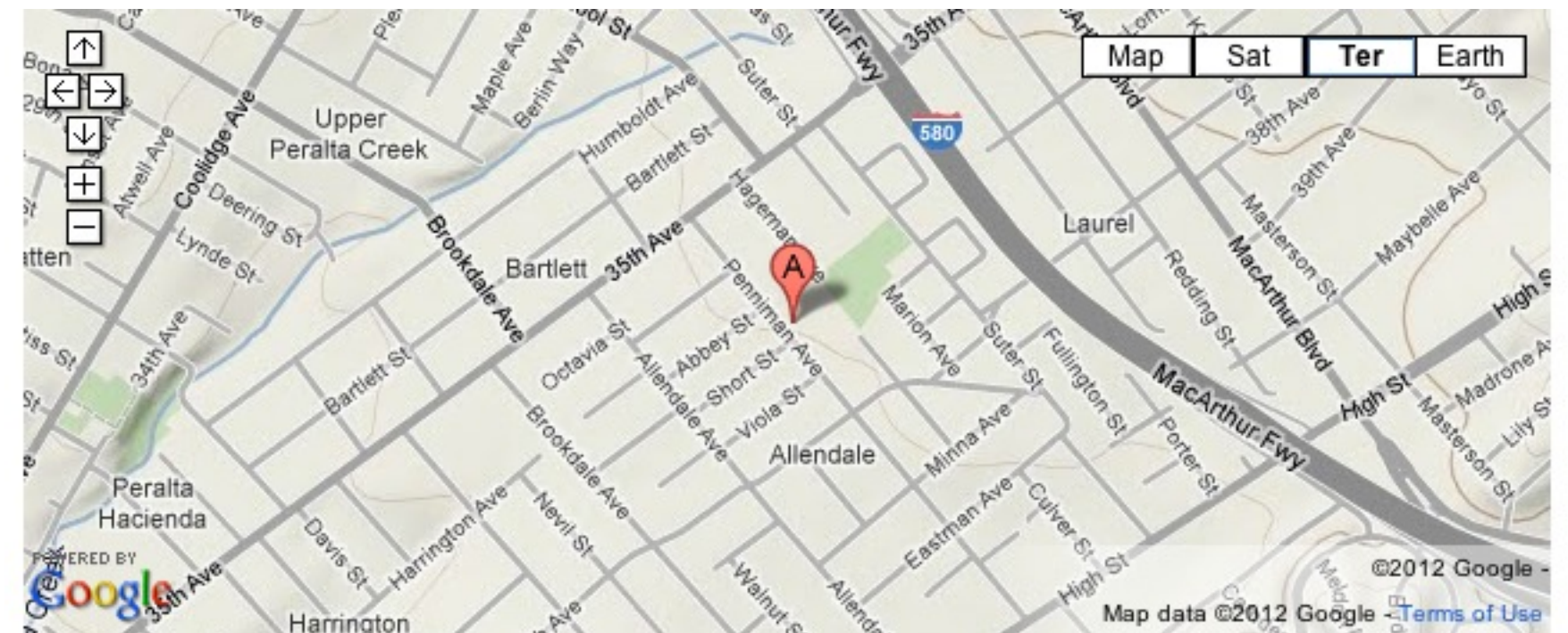
Site 101 Region 2 Grades K-5

This school site is located in the Allendale Park neighborhood of Central Oakland near 35th Avenue and MacArthur. The area is mostly residential with a few small businesses, however the community is bordered by MacArthur Boulevard, 35th Avenue, and High Street, which are all major streets with significant commercial development.

PROGRAMMING (2012-2013)

Schools / Enrollment

	SDC	Non-SDC	Total	API (2010-2011)
Allendale	12	463	475	760



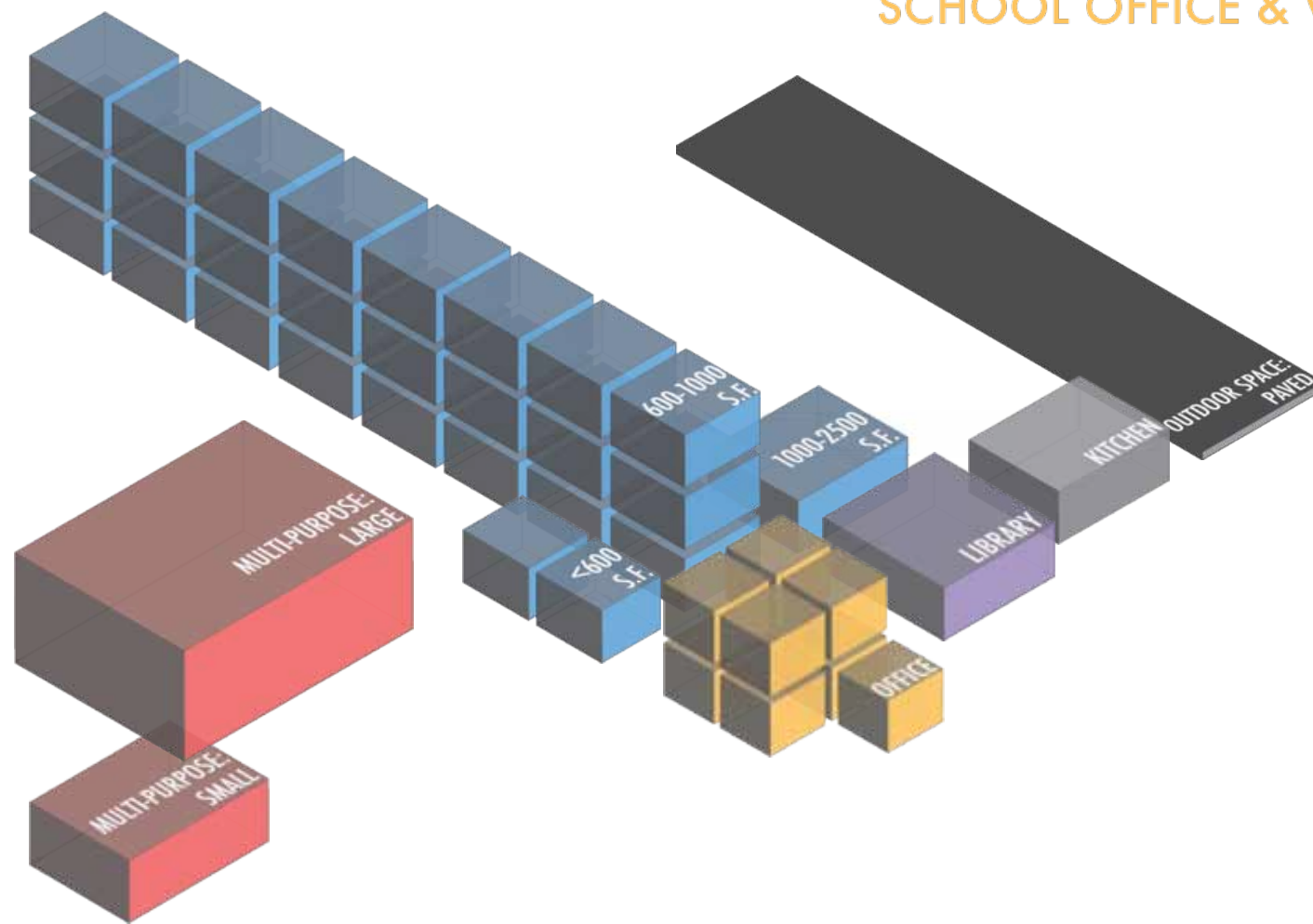
FACILITIES (Summer 2012)

LEARNING ENVIRONMENTS

LIBRARY

MULTI-PURPOSE

SCHOOL OFFICE & WORKSPACE



Summary Counts

	Total	Permanent	Portable
Site Acreage	5.1		
Building Footprint (sf)	40,782		
Building Area (sf)	42,423	41,559	864
Classroom-Sized Rooms	25	24	1
<i>2 rooms < 600 s.f. used as classrooms</i>			
	Number of Rooms		Sq Ft
Library Rooms	1		896
Auditorium/Cafeteria/ Multi-purpose/Gym	2		3,150
Admin/Office/ Conference Room	9		3,020
School Gardens	Number: 1		Sq Ft: 120
Kitchen	Type: Finishing		
On-site Health Clinic	No		

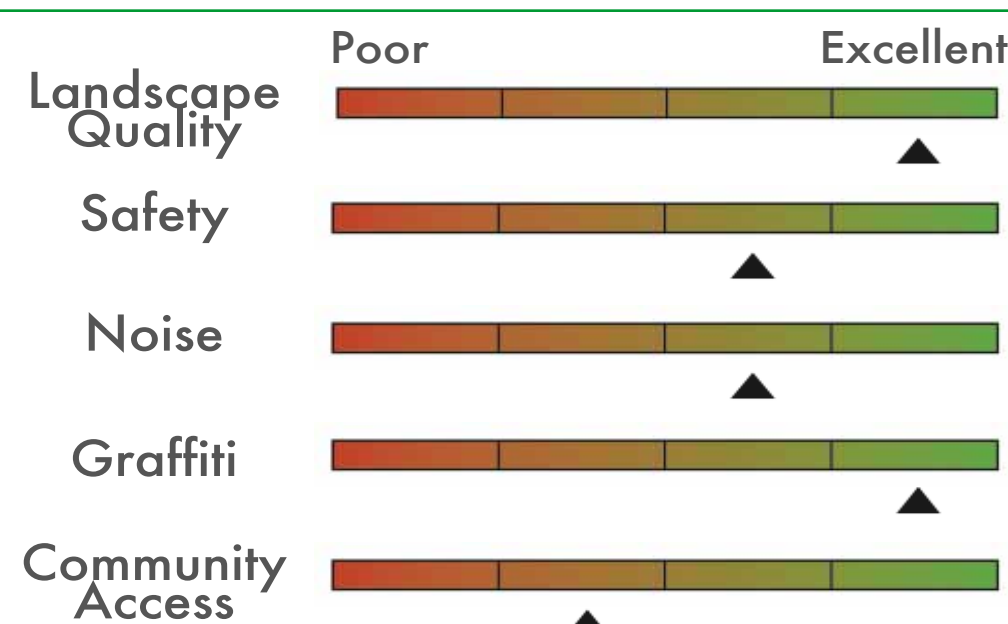
SITE SUMMARY (Summer 2012)

Sports / Recreation

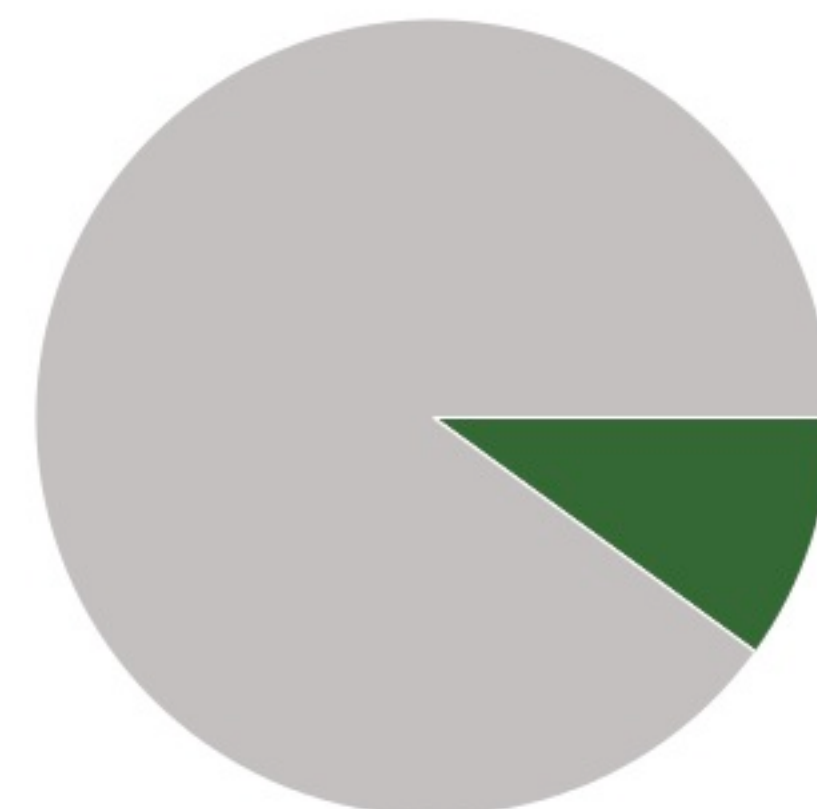
- Play structure ●●
- Basketball hoops ●●●●
- Swimming pool
- Soccer/football field
- Volleyball court
- Track
- Baseball field
- Tennis court

Qualitative Assessment

Transit Accommodations



Open Space



Paved 90% 10% Green

Allendale Elementary School

Building Records

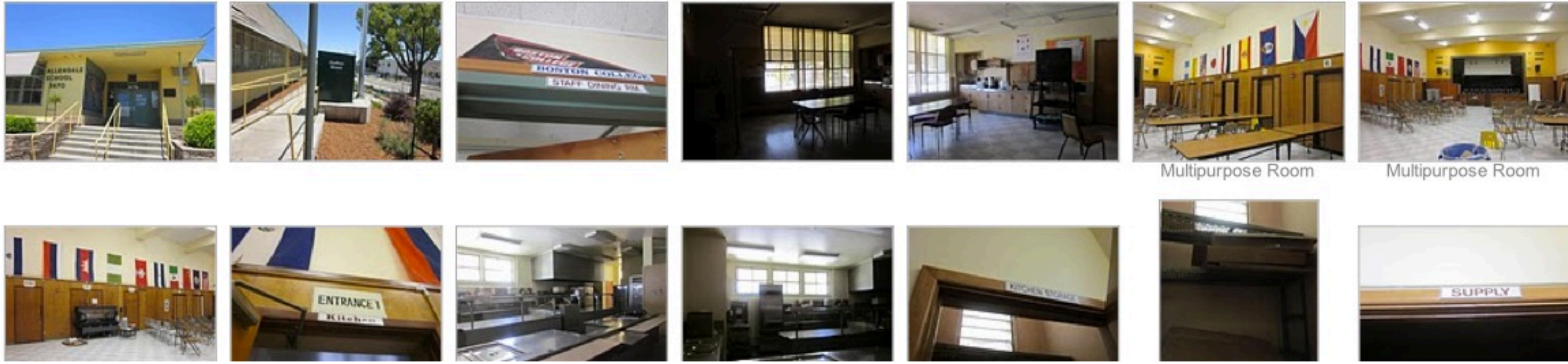
Site ID 101

Region 2

Grades K-5

Site & Facilities Photos - Summer 2011 (Sample)

*To view the full set, visit: <http://bitly.com/rwzfsS>



BUILDING

A

BUILDING AREA (SQFT): 28,357

CONSTRUCTED: 1958

STRUCTURAL ELEMENTS

ROOFING
Plywood on wood joists

FOUNDATION
Strip footings (under struct. walls)

VERTICAL RESISTANCE
Shear wall - Wood shear walls

QUALITATIVE BUILDING ASSESSMENT

EXTERIOR

Physical Condition

Poor Excellent

▲

Circulation & Wayfinding

Excellent

▲

INTERIOR

Physical Condition

Poor Excellent

▲

Circulation & Wayfinding

Excellent

▲

ROOM SUMMARY

NO. OF CLASSROOMS

13

NO. OF OFFICES

6

NO. OF ADMIN ROOMS

9

NO. OF RESTROOMS

11

NO. OF STUDENT COMPUTERS

32

NO. OF ADMIN WORKSTATIONS

11

ADDITIONAL ADMIN SPACES

Teachers' Lounge

MODULAR

K

BUILDING AREA (SQFT): 13,202

CONSTRUCTED: 2001

QUALITATIVE BUILDING ASSESSMENT

EXTERIOR

Physical Condition

Poor Excellent

▲

Circulation & Wayfinding

Excellent

▲

INTERIOR

Physical Condition

Poor Excellent

▲

Circulation & Wayfinding

Excellent

▲

ROOM SUMMARY

NO. OF CLASSROOMS

10

NO. OF OFFICES

0

NO. OF ADMIN ROOMS

0

NO. OF RESTROOMS

1

NO. OF STUDENT COMPUTERS

49

NO. OF ADMIN WORKSTATIONS

0

ADDITIONAL ADMIN SPACES

Teachers' Lounge

Allendale Elementary School

Portable Records

Site ID 101

Region 2

Grades K-5

J

Manufactured: 1996

NO. OF CLASSROOMS

1

NO. OF ADMIN ROOMS

Portable Inventory

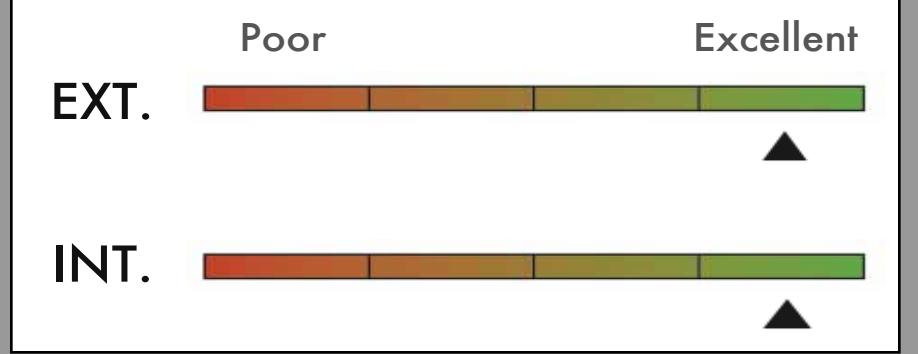
Total Count

1

Average Age

? Years

Qualitative Conditions Assessment



Allendale Elementary School

Rooms Summary & List

Site ID 101

Region 2

Grades K-5

BUILDING	BLDG LEVEL	ROOM #	ROOM USE	ROOM AREA (SQUARE FOOTAGE)	CLASSROOM COMPUTERS	ADMIN WORKSTATIONS	MARKED ROOM #	ROOM CAPACITY
A	1	1	Circulation	1,580				
	1	2	Restroom	240				
	1	3	Restroom	240				
	1	4	Admin/Office	896		3	9	
	1	5	Classroom	896	3		8	
	1	6	Classroom	896	3		11	
	1	7	Classroom	896	4		10	
	1	8	Classroom	896	2		13	
	1	9	Classroom	896	4		12	
	1	10	Classroom	896			15	
	1	11	Library	896				
	1	12	Restroom	98				
	1	13	Restroom	70				
	1	14	Classroom	234				
	1	15	Admin/Office	200				
	1	16	Admin/Office	476		1		
	1	17	Circulation	810				
	1	18	Circulation	744				
	1	19	Circulation	1,793				
	1	20	Restroom	300				
	1	21	Restroom	300				
	1	22	Lounge/Staff Dining	108				
	1	23	Classroom	1,316			1	
	1	24	Classroom	832			2	
	1	25	Admin/Office	290			2	
	1	26	Classroom	832	3		4	
	1	27	Classroom	610	4		3	
	1	28	Classroom	832	3		6	
	1	29	Classroom	896	3		5	
	1	30	Classroom	832	3			
	1	31	Admin/Office	392			1	
	1	32	Admin/Office	86				
	1	33	Storage	11				
	1	34	Admin/Office	420			3	
	1	35	Building Utilities	364				
	1	36	Admin/Office	130			1	
	1	37	Admin/Office	130				
	1	38	Lounge/Staff Dining	441				
	1	39	Restroom	80				
	1	40	Restroom	72				
	1	41	Storage	20				
	1	42	Restroom	108				
	1	43	Building Utilities	56				
	1	44	Storage	20				
	1	45	Multipurpose	2,184				360
	1	46	Building Utilities	672				
	1	47	Storage	153				
	1	48	Circulation	81				
	1	49	Storage	15				
	1	49a	Building Utilities	15				
	1	50	Classroom	399				
	1	51	Restroom	56				
	1	52	Multipurpose	966				
	1	53	Restroom	64				
	1	54	Storage	198				
	1	55	Building Utilities	407				
1	56	Building Utilities	16					

	BLDG LEVEL	ROOM #	ROOM USE	ROOM AREA (SQUARE FOOTAGE)	CLASSROOM COMPUTERS	ADMIN WORKSTATIONS	MARKED ROOM #	ROOM CAPACITY
PORTABLE								
		1	Classroom	864				
MODULAR								
	1	1	Building Utilities	68			21	
	1	2	Restroom	62			22	
	1	3	Lounge/Staff Dining	100			23	
	1	3a	Building Utilities	37				
	1	4	Storage	255			24	
	1	5	Storage	255			25	
	1	6	Classroom	908	32		16	
	1	7	Classroom	908	3		17	
	1	8	Classroom	908	2		18	
	1	9	Classroom	908			19	
	1	10	Classroom	908			20	
	2	1	Classroom	908	4		21	
	2	2	Classroom	908	1		22	
	2	3	Classroom	908	3		23	
	2	4	Classroom	908			24	
	2	5	Classroom	908	4		25	