

# Bella Vista Elementary School

1025 East 28th Street

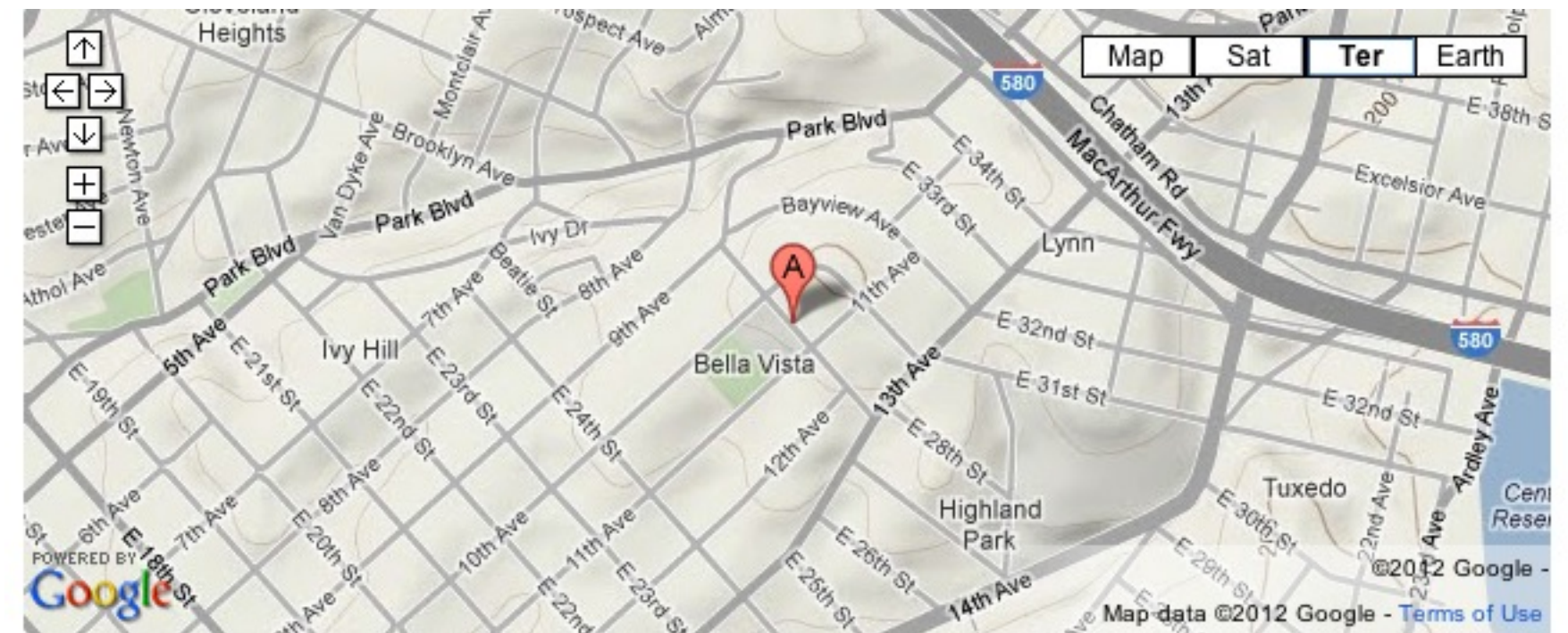
Site 102 Region 2 Grades K-5

Bella Vista Elementary reflects the diversity of its surrounding community in the 600 students it serves, over half of whom are multi-lingual. The neighborhood, located in Central Oakland, is primarily residential and has a public park located next-door to the school that is used for additional playground space. Nearby landmarks include Alameda County's Highland Hospital to the east on 14th Avenue, and Oakland High School to the north on Park Boulevard.

## PROGRAMMING (2012-2013)

### Schools / Enrollment

	SDC	Non-SDC	Total	API (2010-2011)
<b>Bella Vista</b>	49	523	572	844



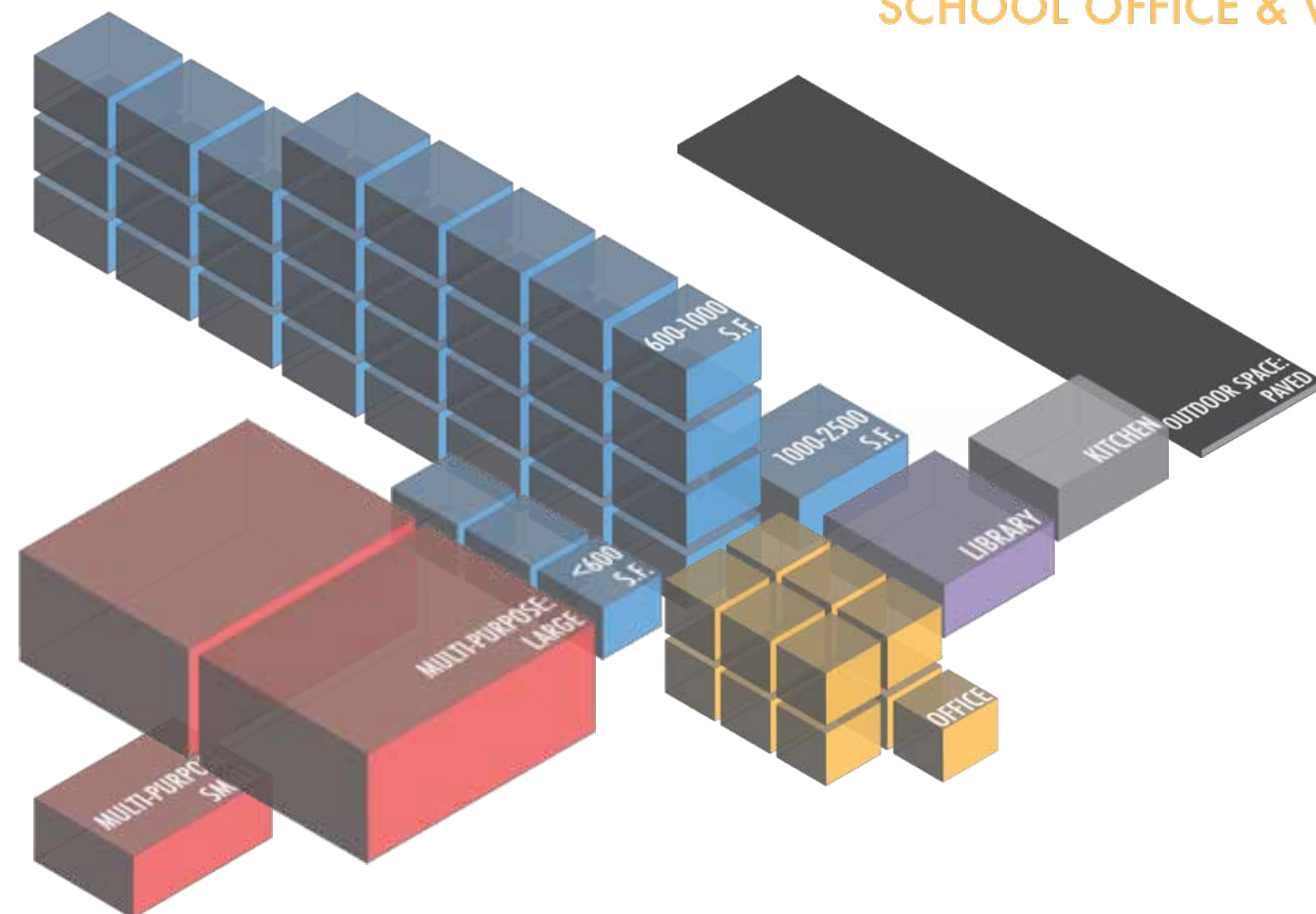
## FACILITIES (Summer 2012)

### LEARNING ENVIRONMENTS

LIBRARY

MULTI-PURPOSE

SCHOOL OFFICE & WORKSPACE



### Summary Counts

	Total	Permanent	Portable
Site Acreage	<b>1.6</b>		
Building Footprint (sf)	<b>34,907</b>		
Building Area (sf)	<b>54,784</b>	43,123	11,661
Classroom-Sized Rooms	<b>30</b>	17	13
<i>3 rooms &lt; 600 s.f. used as classrooms</i>			
	Number of Rooms		Sq Ft
Library Rooms	<b>1</b>		960
Auditorium/Cafeteria/ Multi-purpose/Gym	<b>3</b>		6,374
Admin/Office/ Conference Room	<b>13</b>		3,258
School Gardens	Number: <b>2</b>		Sq Ft: 140
Kitchen	Type: Finishing		
On-site Health Clinic	No		

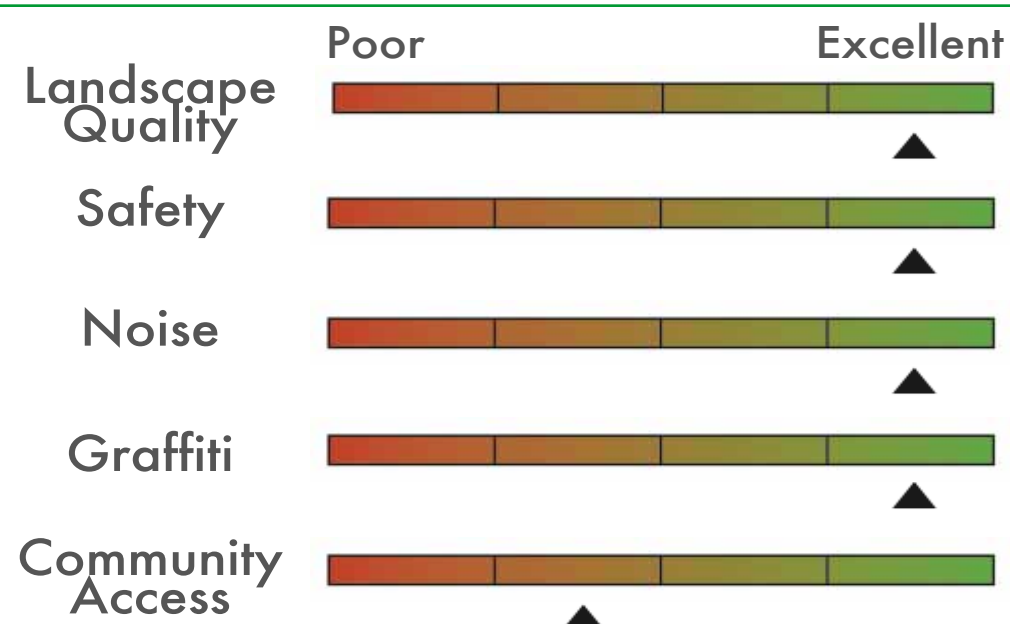
## SITE SUMMARY (Summer 2012)

### Sports / Recreation

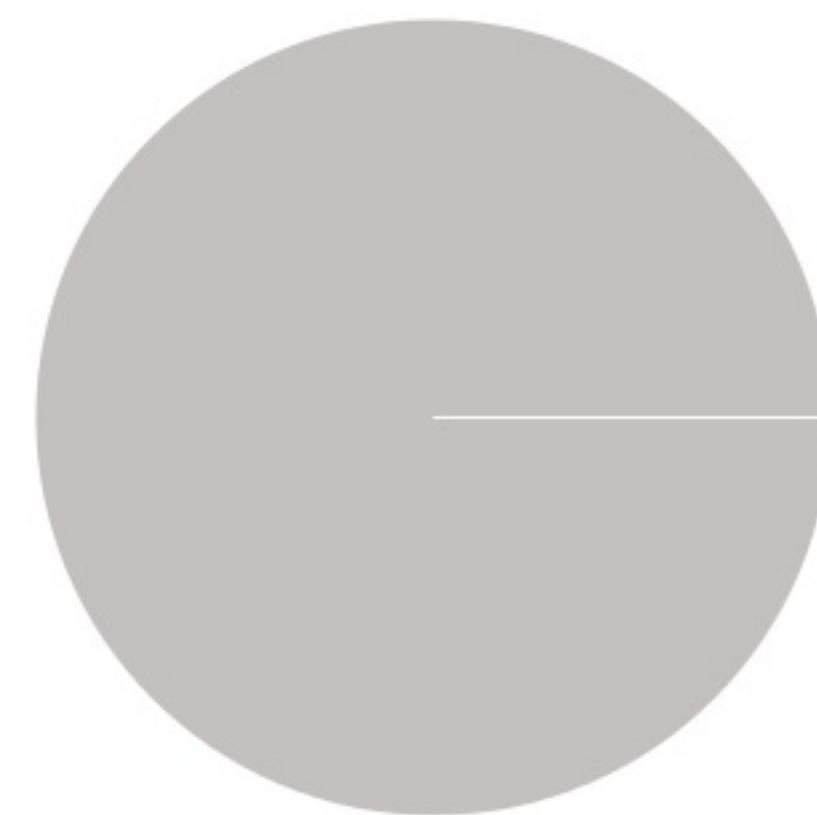
- Play structure ●
- Basketball hoops
- Swimming pool
- Soccer/football field
- Volleyball court
- Track
- Baseball field
- Tennis court

### Qualitative Assessment

#### Transit Accommodations



### Open Space



Paved 100% 0% Green

# Bella Vista Elementary School

Building Records

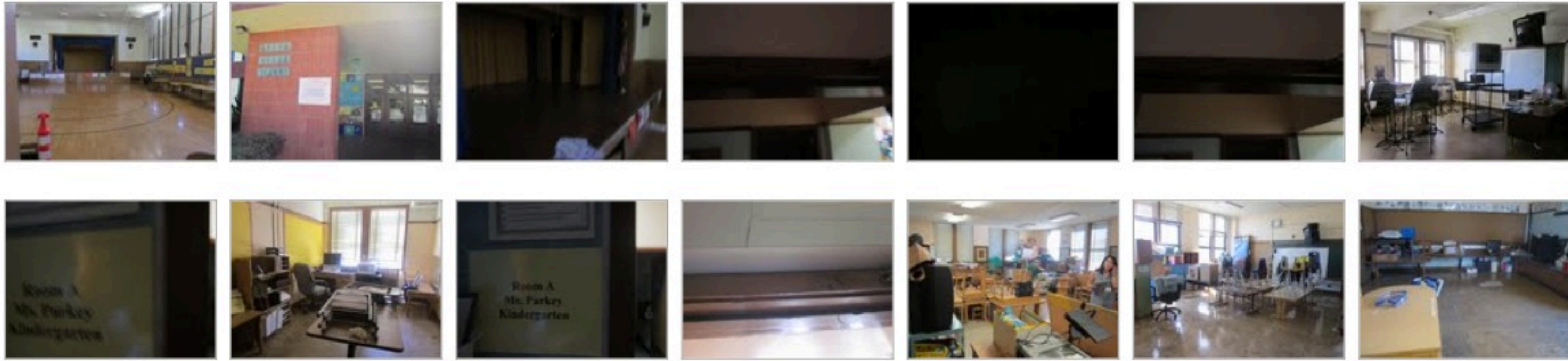
Site ID 102

Region 2

Grades K-5

## Site & Facilities Photos - Summer 2011 (Sample)

\*To view the full set, visit: <http://bitly.com/uELwo4>



### BUILDING

**A**

BUILDING AREA (SQFT): 43,123

CONSTRUCTED: 1948

#### STRUCTURAL ELEMENTS

##### ROOFING

Concrete slab on concrete beams (non-ductile)

##### FOUNDATION

Spread (under int. columns) & Strip footings (under struct. walls)

##### VERTICAL RESISTANCE

Shear wall - Concrete; Rigid frames - Concrete moment frames

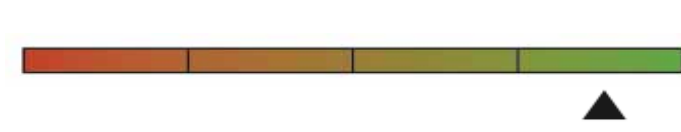
#### QUALITATIVE BUILDING ASSESSMENT

**EXTERIOR**

Physical Condition

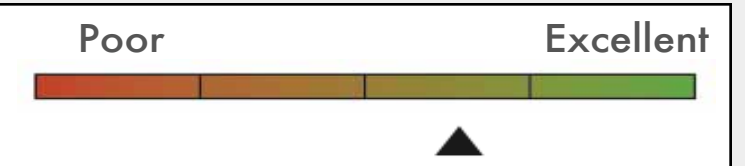


Circulation & Wayfinding

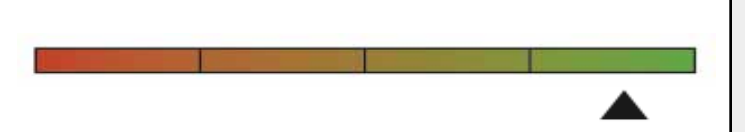


**INTERIOR**

Physical Condition



Circulation & Wayfinding



#### ROOM SUMMARY

NO. OF CLASSROOMS

14

NO. OF OFFICES

8

NO. OF ADMIN ROOMS

13

NO. OF RESTROOMS

15

NO. OF STUDENT COMPUTERS

44

NO. OF ADMIN WORKSTATIONS

13

ADDITIONAL ADMIN SPACES

Teachers' Lounge

# Bella Vista Elementary School

Portable Records

Site ID 102

Region 2

Grades K-5

	Manufactured:	<u>NO. OF CLASSROOMS</u>	<u>NO. OF ADMIN ROOMS</u>
PC	1999	1	
PD	1997	1	
PE	1997	1	
PF	1997	1	
PG	1997	1	
PH	1997	1	
PI	1999	1	
PJ	1999	1	
PK	1999	1	
PL	1999	1	
PM	1999	1	
PN	1999	1	
PO	1999	1	


Portable Inventory


Total Count  
**13**

Average Age  
**14 Years**

Qualitative Conditions Assessment

Poor Excellent

EXT. 

INT. 

# Bella Vista Elementary School

Rooms Summary & List

Site ID 102

Region 2

Grades K-5

BUILDING	BLDG LEVEL	ROOM #	ROOM USE	ROOM AREA (SQUARE FOOTAGE)	CLASSROOM COMPUTERS	ADMIN WORKSTATIONS	MARKED ROOM #	ROOM CAPACITY
<b>A</b>								
	1	1	Classroom	980				
	1	2	Classroom	446	1		26	
	1	3	Storage	39				
	1	4	Restroom	91			25	
	1	5	Storage	116				
	1	7	Restroom	67				
	1	8	Circulation	94				
	1	9	Admin/Office	126				
	1	10	Restroom	374			20	
	1	11	Restroom	90				
	1	12	Restroom	42				
	1	13	Storage	29				
	1	14	Storage	9			30	
	1	15	Storage	9				
	1	16	Building Utilities	8				
	1	17	Storage	107				
	1	18	Admin/Office	165		1	29	
	1	19	Classroom	1,026				
	1	20	Restroom	26				
	1	21	Circulation	161				
	1	23	Cafeteria	2,312				
	1	24	Building Utilities	651		1		
	1	26	Storage	76				
	1	27	Lounge/Staff Dining	504				
	1	30	Restroom	74				
	1	31	Storage	103				
	1	33	Restroom	477				
	1	35	Building Utilities	950				
	1	36	Circulation	57				
	1	37	Storage	947				
	1	38	Storage	3,110				
	1	39	Circulation	485				
	2	1	Multipurpose	991				
	2	2	Storage	334			26	
	2	5	Classroom	337				
	2	6	Circulation	89				
	2	7	Admin/Office	219		1		
	2	8	Multipurpose	3,071				
	2	9	Building Utilities	189		1		
	2	10	Restroom	198			20	
	2	11	Classroom	470	1			
	2	12	Classroom	720				
	2	13	Admin/Office	128				
	2	14	Storage	52			30	
	2	15	Restroom	59				
	2	16	Classroom	960	2			
	2	17	Classroom	960				
	2	18	Classroom	960	2		29	
	2	19	Classroom	960	1			
	2	21	Lounge/Staff Dining	981		1		
	2	22	Storage	314				
	2	23	Classroom	981	2			
	2	24a	Admin/Office	174		1		
	2	24b	Building Utilities	78				
	2	24c	Storage	71				
	2	25	Admin/Office	158				
	2	26a	Admin/Office	181		1		

	BLDG LEVEL	ROOM #	ROOM USE	ROOM AREA (SQUARE FOOTAGE)	CLASSROOM COMPUTERS	ADMIN WORKSTATIONS	MARKED ROOM #	ROOM CAPACITY
	2	26b	Admin/Office	181				
	2	27	Classroom	687				
	2	28	Restroom	85				
	2	29	Admin/Office	247		1		
	2	30	Storage	349		1		
	2	31	Admin/Office	373		2		
	2	32	Storage	44				
	2	33	Storage	30				
	2	34	Admin/Office	244		2		
	2	35	Storage	16				
	2	36	Restroom	151				
	2	37	Admin/Office	675				
	2	38	Circulation	2,900				
	3	2	Admin/Office	387			26	
	3	4	Classroom	960	4		25	
	3	10	Classroom	981	1		20	
	3	11	Storage	173				
	3	12	Restroom	52				
	3	13	Restroom	68				
	3	14	Classroom	981			30	
	3	15	Circulation	2,788				
	3	16	Building Utilities	180				
	3	16a	Storage	180				
	3	17	Library	960	3			
	3	18	Classroom	960	28		29	
	3	19	Classroom	953	4			
	3	20	Restroom	90				
	3	21	Building Utilities	42				
<b>PORTABLE</b>								
		1	Classroom	897				
<b>PORTABLE</b>								
		1	Classroom	897	1			
<b>PORTABLE</b>								
		1	Classroom	897				
<b>PORTABLE</b>								
		1	Classroom	897	3			
<b>PORTABLE</b>								
		1	Classroom	897	1			
<b>PORTABLE</b>								
		1	Classroom	897	2			
<b>PORTABLE</b>								
		1	Classroom	897	2			
<b>PORTABLE</b>								
		1	Classroom	897				
<b>PORTABLE</b>								
		1	Classroom	897	2			
<b>PORTABLE</b>								
		1	Classroom	897				

		BLDG LEVEL	ROOM #	ROOM USE	ROOM AREA (SQUARE FOOTAGE)	CLASSROOM COMPUTERS	ADMIN WORKSTATIONS	MARKED ROOM #	ROOM CAPACITY
<b>PORTABLE</b>	<b>PM</b>								
			1	Classroom	897				
<b>PORTABLE</b>	<b>PN</b>								
			1	Classroom	897				
<b>PORTABLE</b>	<b>PO</b>								
			1	Classroom	897				