

Parker Elementary School

Building Records

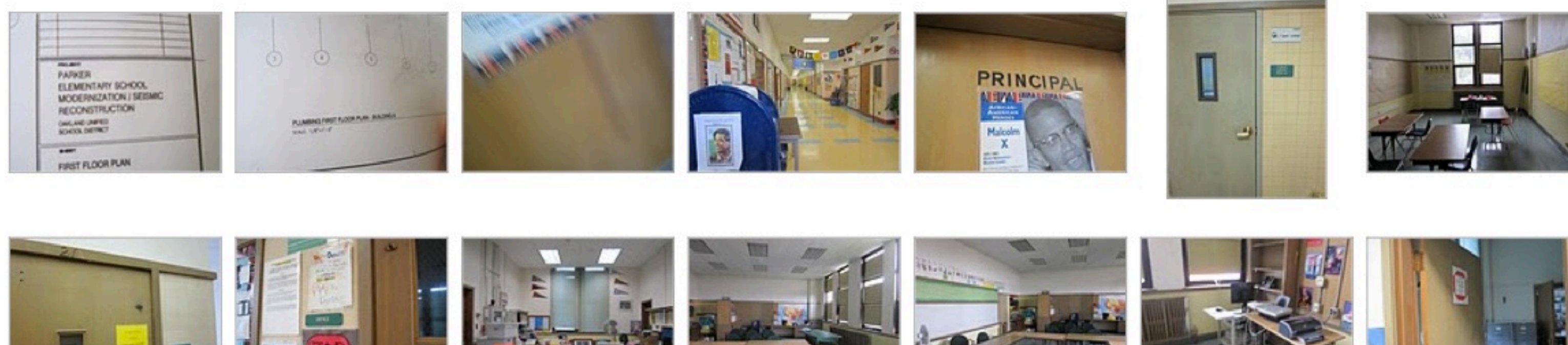
Site ID 144

Region 3

Grades K-5

Site & Facilities Photos - Summer 2011 (Sample)

*To view the full set, visit: <http://bitly.com/t7sTmX>



BUILDING

A

BUILDING AREA (SQFT): 44,631

CONSTRUCTED: 1948

STRUCTURAL ELEMENTS

ROOFING

Concrete slab on concrete beams

FOUNDATION

Spread footings (under columns); strip footings (under structural walls)

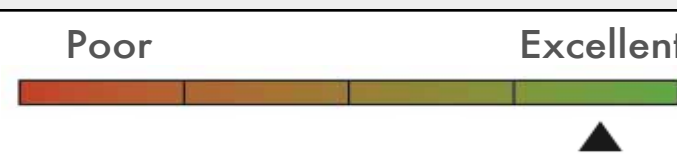
VERTICAL RESISTANCE

Shear wall - Concrete shear walls; Rigid frames - Concrete moment frames

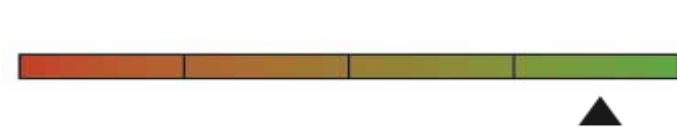
QUALITATIVE BUILDING ASSESSMENT

EXTERIOR

Physical Condition

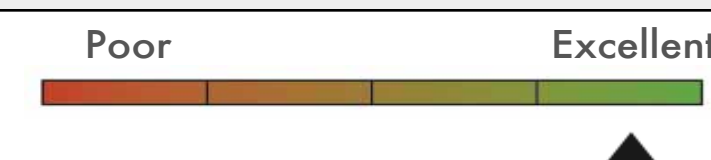


Circulation & Wayfinding

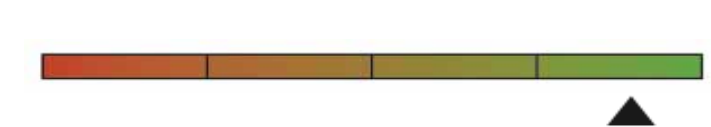


INTERIOR

Physical Condition



Circulation & Wayfinding



ROOM SUMMARY

NO. OF CLASSROOMS

17

NO. OF OFFICES

4

NO. OF ADMIN ROOMS

6

NO. OF RESTROOMS

12

NO. OF STUDENT COMPUTERS

61

NO. OF ADMIN WORKSTATIONS

7

ADDITIONAL ADMIN SPACES

Teachers' Lounge

Parker Elementary School

Portable Records

Site ID 144

Region 3

Grades K-5

Code	Manufactured:	NO. OF CLASSROOMS	NO. OF ADMIN ROOMS
PC	1969	1	1
PD	1970	1	1
PE	2000	1	1
PF	2000	1	1
PB	1957	1	1
P1	1975	1	1
P2	1975	1	1
P3	1975	1	1
P4	1975	1	1

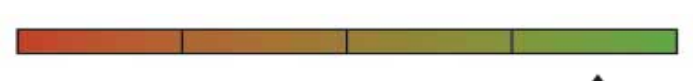
Portable Inventory

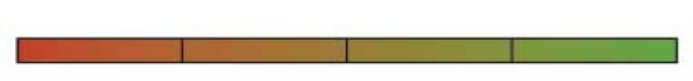
Total Count
9

Average Age
35 Years

Qualitative Conditions Assessment

Poor Excellent

EXT. 

INT. 

Parker Elementary School

Rooms Summary & List

Site ID 144

Region 3

Grades K-5

BUILDING	BLDG LEVEL	ROOM #	ROOM USE	ROOM AREA (SQUARE FOOTAGE)	CLASSROOM COMPUTERS	ADMIN WORKSTATIONS	MARKED ROOM #	ROOM CAPACITY
A								
	1	3	Building Utilities	47				
	1	101	Cafeteria	2,257				
	1	102	Building Utilities	525				
	1	103	Circulation	51				
	1	104	Storage	79				
	1	105	Restroom	60				
	1	106	Classroom	473			3	
	1	107	Circulation	44				
	1	108	Storage	97				
	1	109a	Classroom	293				
	1	109	Classroom	1,207	3		1	
	1	109b	Storage	74				
	1	110	Restroom	97				
	1	111a	Storage	230				
	1	111	Classroom	968	2		2	
	1	112	Restroom	48				
	1	113	Circulation	486				
	1	114	Building Utilities	50				
	1	115	Building Utilities	118				
	1	116	Circulation	248				
	1	117	Restroom	460				
	1	118	Storage	83				
	1	118	Storage	163				
	1	119		103				
	1	120	Circulation	266				
	1	121	Storage	200				
	1	122	Restroom	353				
	1	123	Storage	1,833				
	1	124	Storage	94				
	1	125	Building Utilities	980				
	2	16	Circulation	107				
	2	30	Building Utilities	18				
	2	33	Building Utilities	37				
	2	201	Classroom	968	4		11	
	2	202	Admin/Office	193				
	2	203	Classroom	968	2		14	
	2	204	Lounge/Staff Dining	306		1		
	2	205	Restroom	86				
	2	206	Classroom	946	5		12	
	2	207	Classroom	946	2		9	
	2	208	Classroom	946	2		10	
	2	209	Classroom	980	3		7	
	2	210	Circulation	2,858				
	2	211	Classroom	946			8	
	2	212	Building Utilities	99				
	2	213	Admin/Office	118		1		
	2	214	Admin/Office	210		1		
	2	215	Circulation	169				
	2	216	Building Utilities	131		1		
	2	217	Storage	17				
	2	218	Admin/Office	242				
	2	219	Storage	270				
	2	220	Admin/Office	412		2		
	2	221a	Storage	34				
	2	221		299				
	2	222	Storage	30				
	2	223	Restroom	68				

	BLDG LEVEL	ROOM #	ROOM USE	ROOM AREA (SQUARE FOOTAGE)	CLASSROOM COMPUTERS	ADMIN WORKSTATIONS	MARKED ROOM #	ROOM CAPACITY								
PORTABLE																
									PC							
										1	Admin/Office	45				
										2	Classroom	640				
										3	Storage	45				
										4	Restroom	45				
5	Restroom	45														
PORTABLE																
									PD							
										1	Storage	45				
										2	Classroom	440				
										3	Admin/Office	75				
4	Restroom	45														
PORTABLE																
									PE							
1	Classroom	828														
PORTABLE																
									PF							
1	Classroom	828														