

# Santa Fe Elementary School

915 54th Street

Site 150 Region 1 Grades

Santa Fe is a K-5 school site located on 54th Street between Market Street and Adeline Street in West Oakland near the Emeryville border. The surrounding neighborhood is predominantly residential, although there are several major avenues in the area as well as a substantial business presence intermitently along Market and Adeline, and further east on MLK Boulevard.

## PROGRAMMING (2012-2013)

### Schools / Enrollment

SDC Non-SDC Total API  
(2010-2011)



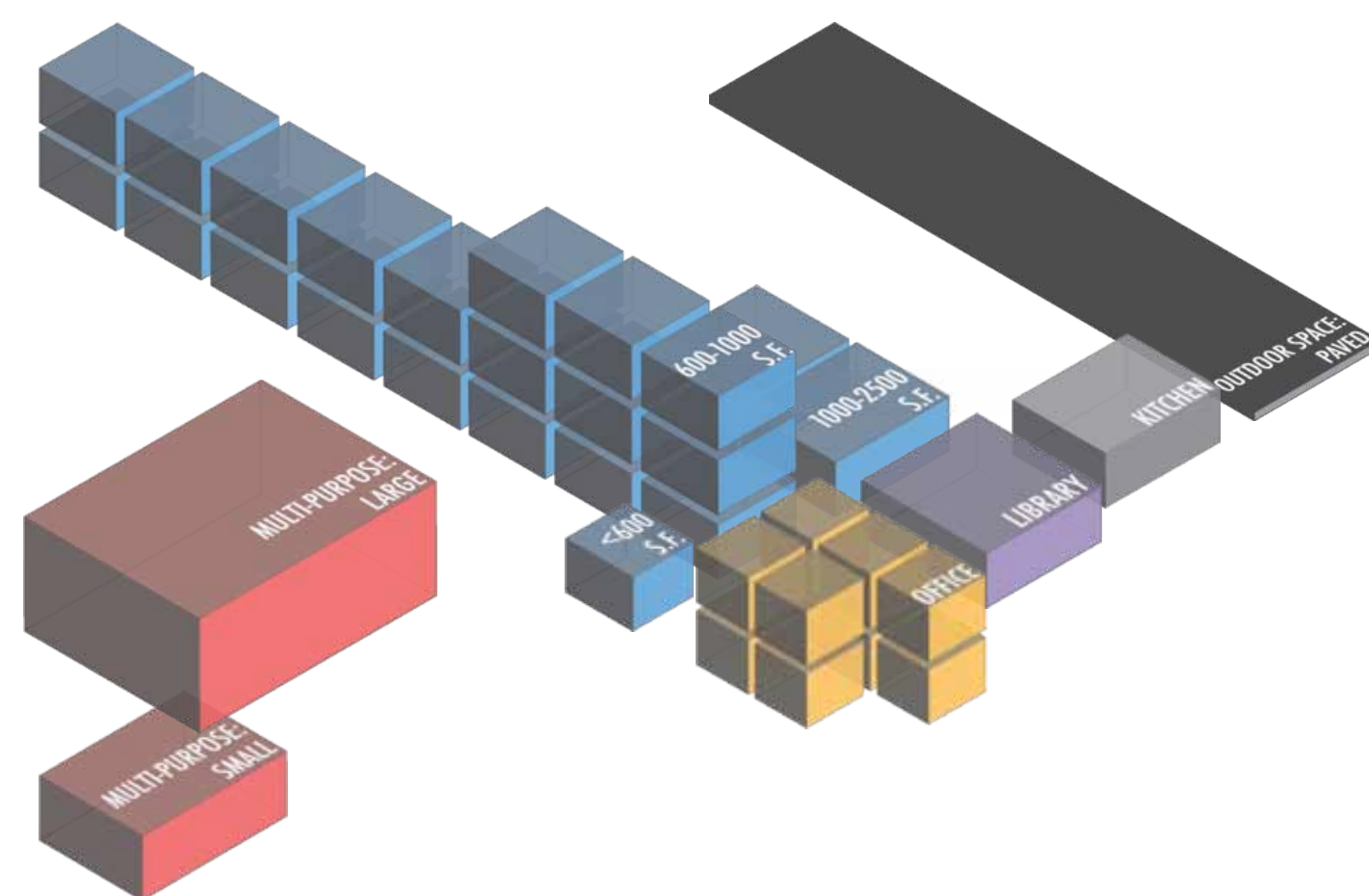
## FACILITIES (Summer 2012)

### LEARNING ENVIRONMENTS

LIBRARY

MULTI-PURPOSE

SCHOOL OFFICE & WORKSPACE



### Summary Counts

	Total	Permanent	Portable
Site Acreage	3.4		
Building Footprint (sf)	26,234		
Building Area (sf)	40,069	37,245	2,824
Classroom-Sized Rooms	21	19	2
<i>1 room &lt; 600 s.f. used as classroom</i>			
	Number of Rooms		Sq Ft
Library Rooms	1		873
Auditorium/Cafeteria/ Multi-purpose/Gym	2		4,067
Admin/Office/ Conference Room	10		2,227
School Gardens (None)			
Kitchen		Type: Finishing	
On-site Health Clinic		No	

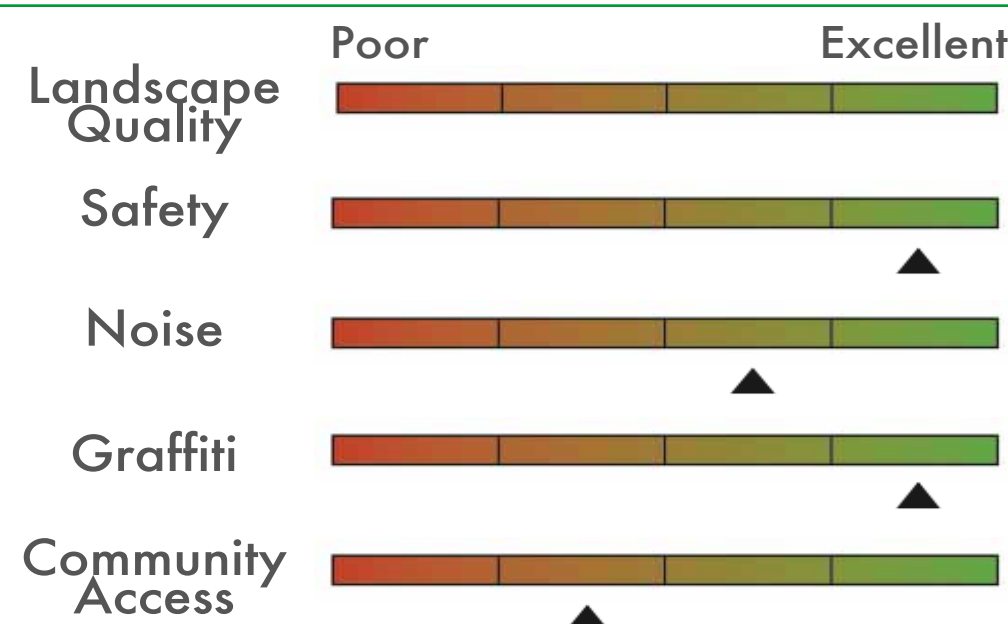
## SITE SUMMARY (Summer 2012)

### Sports / Recreation

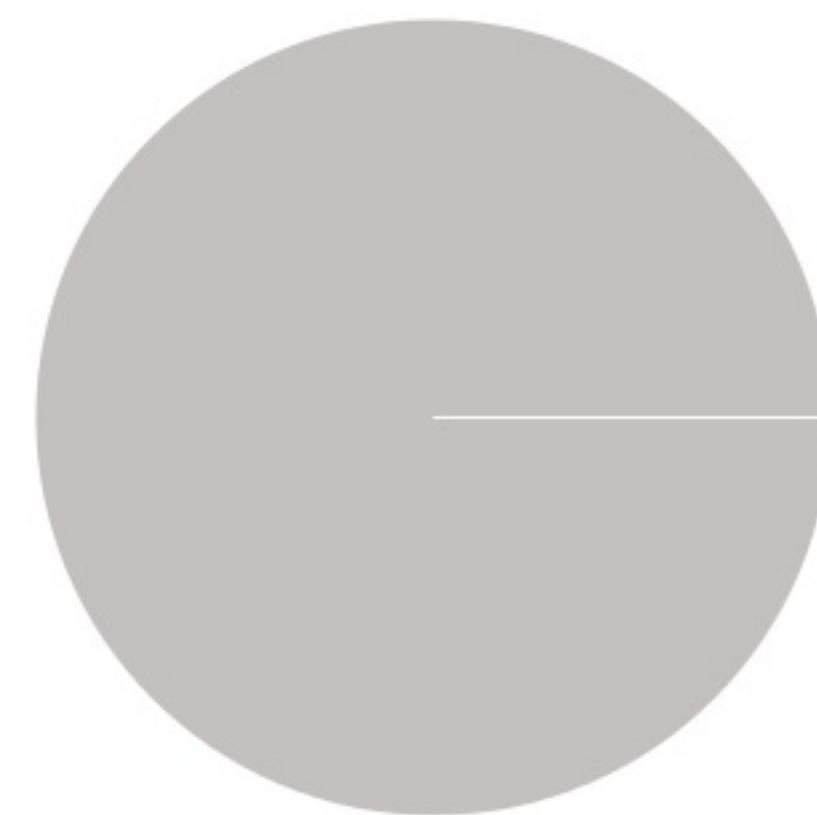
- Play structure ●
- Basketball hoops
- Swimming pool
- Soccer/football field
- Volleyball court
- Track
- Baseball field
- Tennis court

### Qualitative Assessment

#### Transit Accommodations



### Open Space



Paved 100% 0% Green

# Santa Fe Elementary School

Building Records

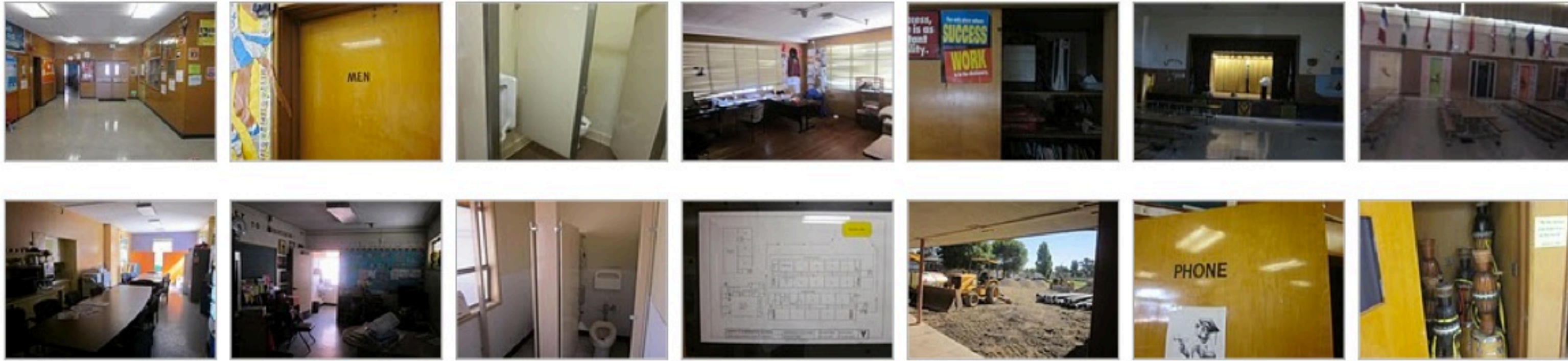
Site ID 150

Region 1

Grades

## Site & Facilities Photos - Summer 2011 (Sample)

\*To view the full set, visit: <http://bitly.com/uDmyG7>



### BUILDING A

BUILDING AREA (SQFT): 33,482

CONSTRUCTED: 1957

#### STRUCTURAL ELEMENTS

ROOFING  
Steel deck

FOUNDATION  
Spread footings (under interior columns); strip footings (under structural walls)

VERTICAL RESISTANCE  
Rigid frames - Steel moment frames

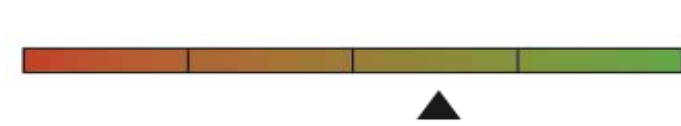
#### QUALITATIVE BUILDING ASSESSMENT

EXTERIOR

Physical Condition

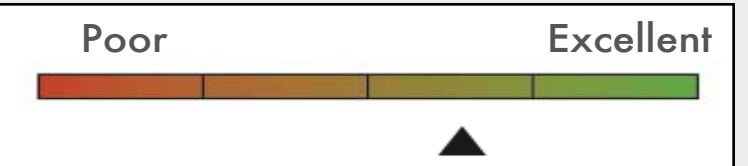


Circulation & Wayfinding

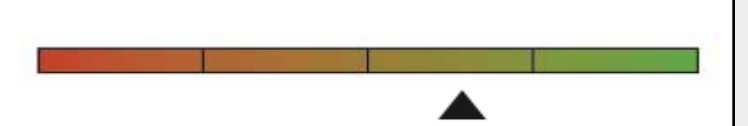


INTERIOR

Physical Condition



Circulation & Wayfinding



#### ROOM SUMMARY

NO. OF CLASSROOMS

16

NO. OF OFFICES

8

NO. OF ADMIN ROOMS

9

NO. OF RESTROOMS

9

NO. OF STUDENT COMPUTERS

30

NO. OF ADMIN WORKSTATIONS

13

ADDITIONAL ADMIN SPACES

Teachers' Lounge

### BUILDING B

BUILDING AREA (SQFT): 3,763

CONSTRUCTED: 1957

#### STRUCTURAL ELEMENTS

ROOFING  
Plywood on joists

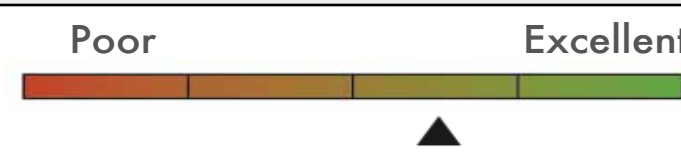
FOUNDATION  
Strip footings (under structural walls)

VERTICAL RESISTANCE  
Wood stud walls

#### QUALITATIVE BUILDING ASSESSMENT

EXTERIOR

Physical Condition

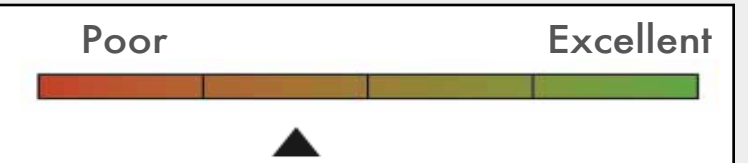


Circulation & Wayfinding



INTERIOR

Physical Condition



Circulation & Wayfinding



#### ROOM SUMMARY

NO. OF CLASSROOMS

3

NO. OF OFFICES

3

NO. OF ADMIN ROOMS

4

NO. OF RESTROOMS

4

NO. OF STUDENT COMPUTERS

3

NO. OF ADMIN WORKSTATIONS

3

ADDITIONAL ADMIN SPACES

Teachers' Lounge

# Santa Fe Elementary School

Portable Records

Site ID 150

Region 1

Grades

	Manufactured:	<u>NO. OF CLASSROOMS</u>	<u>NO. OF ADMIN ROOMS</u>
<b>P1</b>	1985	1	
<b>P2</b>	1985		1
<b>P3</b>	1985	1	

Portable Inventory

Total Count  
3

Average Age  
27 Years

Qualitative Conditions Assessment

	Poor	Excellent
EXT.		
INT.		

# Santa Fe Elementary School

Rooms Summary & List

Site ID 150

Region 1

Grades

BUILDING	BLDG LEVEL	ROOM #	ROOM USE	ROOM AREA (SQ. FT.)	CLASSROOM COMPUTERS	ADMIN WORKSTATIONS	MARKED ROOM #	ROOM CAPACITY
<b>A</b>								
	1	1	Building Utilities	84				
	1	um1	Admin/Office	288		2		
	1	2	Multipurpose	739				
	1	3	Storage	138				
	1	4	Admin/Office	271		2	10	
	1	5	Storage	73				
	1	6	Circulation	159			12	
	1	7	Storage	25			13	
	1	8	Restroom	74				
	1	9	Storage	113				
	1	10	Storage	11				
	1	11	Storage	11				
	1	12	Building Utilities	775				
	1	13	Lounge/Staff Dining	486				
	1	14	Admin/Office	219		2	14	
	1	15	Circulation	75			15	
	1	16	Circulation	48				
	1	17	Restroom	315			16	
	1	18	Restroom	75			17	
	1	19	Admin/Office	105		1		
	1	20	Admin/Office	186		1		
	1	21	Admin/Office	193		1		
	1	22	Storage	28				
	1	23	Admin/Office	207		1		
	1	24	Storage	14				
	1	25	Admin/Office	577		2		
	1	26	Admin/Office	109				
	1	27	Building Utilities	327				
	1	28	Classroom	552	2		8	
	1	29	Classroom	873			7	
	1	30	Classroom	872			6	
	1	31	Building Utilities	31				
	1	32	Restroom	294				
	1	33	Storage	101				
	1	35	Classroom	873				
	1	36	Classroom	873				
	1	37	Classroom	873			3	
	1	38	Circulation	2,451				
	1	39	Classroom	873			2	
	1	40	Classroom	873			1	
	1	41	Storage	180				
	1	42	Building Utilities	101		1		
	1	43	Circulation	711				
	1	44	Circulation	131				
	1	45	Restroom	93				
	1	46	Storage	79				
	1	47	Restroom	62				
	1	48	Storage	113				
	1	49	Multipurpose	3,328				
	2	1	Building Utilities	101				
	2	um2	Building Utilities	220				
	2	3	Classroom	873	25			
	2	4	Classroom	873			10	
	2	5	Classroom	873				
	2	6	Classroom	873	1		12	
	2	7	Classroom	873			13	
	2	9	Restroom	122				

	BLDG LEVEL	ROOM #	ROOM USE	ROOM AREA (SQUARE FOOTAGE)	CLASSROOM COMPUTERS	ADMIN WORKSTATIONS	MARKED ROOM #	ROOM CAPACITY
	2	10	Building Utilities	16				
	2	11	Restroom	21				
	2	12	Restroom	240				
	2	13	Building Utilities	53				
	2	14	Classroom	873	1		14	
	2	15	Classroom	873			15	
	2	16	Circulation	2,401				
	2	17	Classroom	873			16	
	2	18	Classroom	873	3		17	
	2	19	Library	873	4			
	2	20	Storage	375				
	3	1	Building Utilities	168				
	3	2	Building Utilities	756				
	3	3	Building Utilities	80				
	3	4	Circulation	53			10	
	3	5	Building Utilities	84				
<b>BUILDING</b>		<b>B</b>						
	1	1	Restroom	64				
	1	2	Storage	96				
	1	3	Building Utilities	104				
	1	4	Classroom	924	3		18	
	1	5	Classroom	1,207			19	
	1	6	Restroom	56				
	1	7	Storage	19				
	1	8	Restroom	56				
	1	9	Restroom	19				
	1	10	Classroom	1,218			20	
<b>PORTABLE</b>		<b>P1</b>						
		1	Classroom	814				
		2	Building Utilities	60				
		3	Restroom	80				
		4	Storage	80				
<b>PORTABLE</b>		<b>P2</b>						
		5	Storage	82				
		6	Storage	22				
		7	Restroom	36				
		8	Admin/Office	72		1		
		9	Restroom	66				
		10	Lounge/Staff Dining	70		1		
		11	Restroom	66				
		12	Building Utilities	70				
		15	Circulation	239		1		
<b>PORTABLE</b>		<b>P3</b>						
		13	Storage	101				
		14	Classroom	966	2			