

# John Swett Elementary School

4551 Steele Street

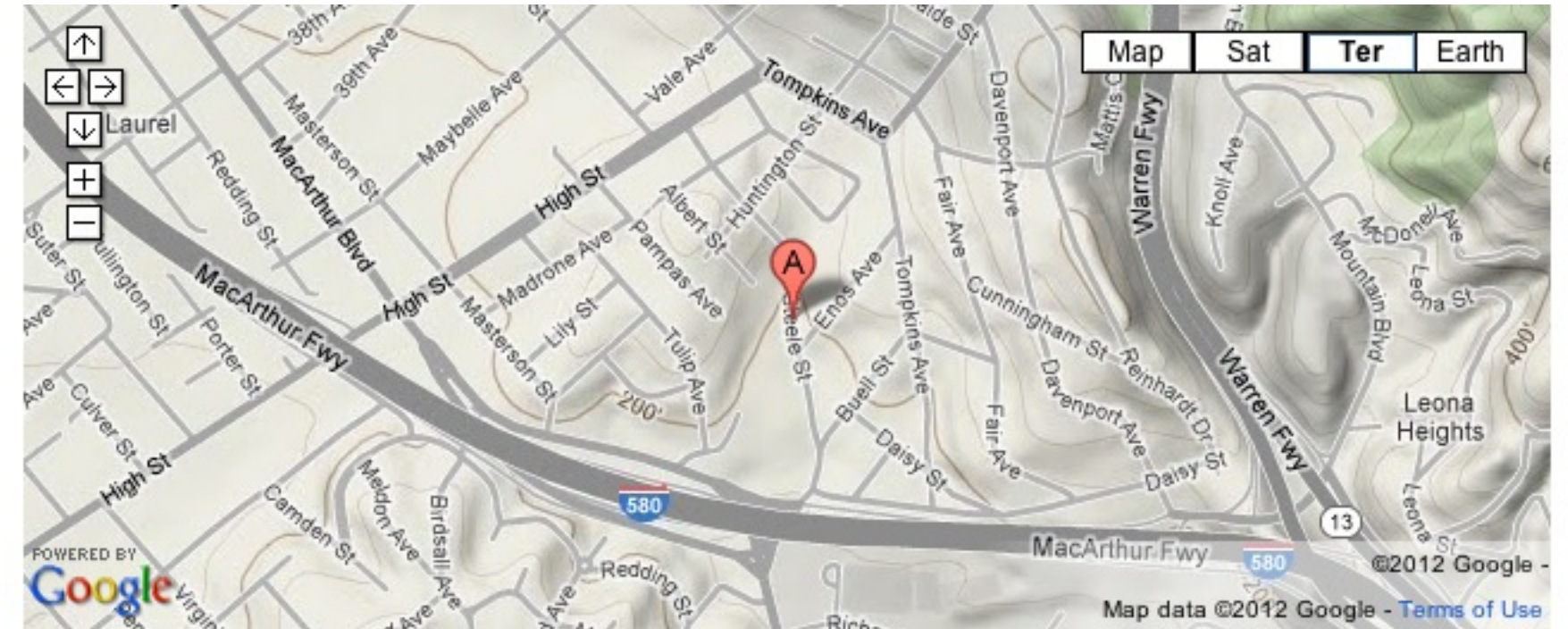
Site 156 Region 2 Grades

This site lies on the same parcel as the Tilden site (ID#177) and they are both serving administrative functions at present. John Swett is located in the Oakland foothills in a residential neighborhood near the junction of I-580 & CA-13. Mills College sits just opposite of John Swett on the other side of the I-580 freeway, and High Street lies three blocks to the west, providing easy circulation and public transportation to Oakland's hill communities as well as neighborhoods further to the south and west.

## PROGRAMMING (2012-2013)

### Schools / Enrollment

SDC Non-SDC Total API  
(2010-2011)



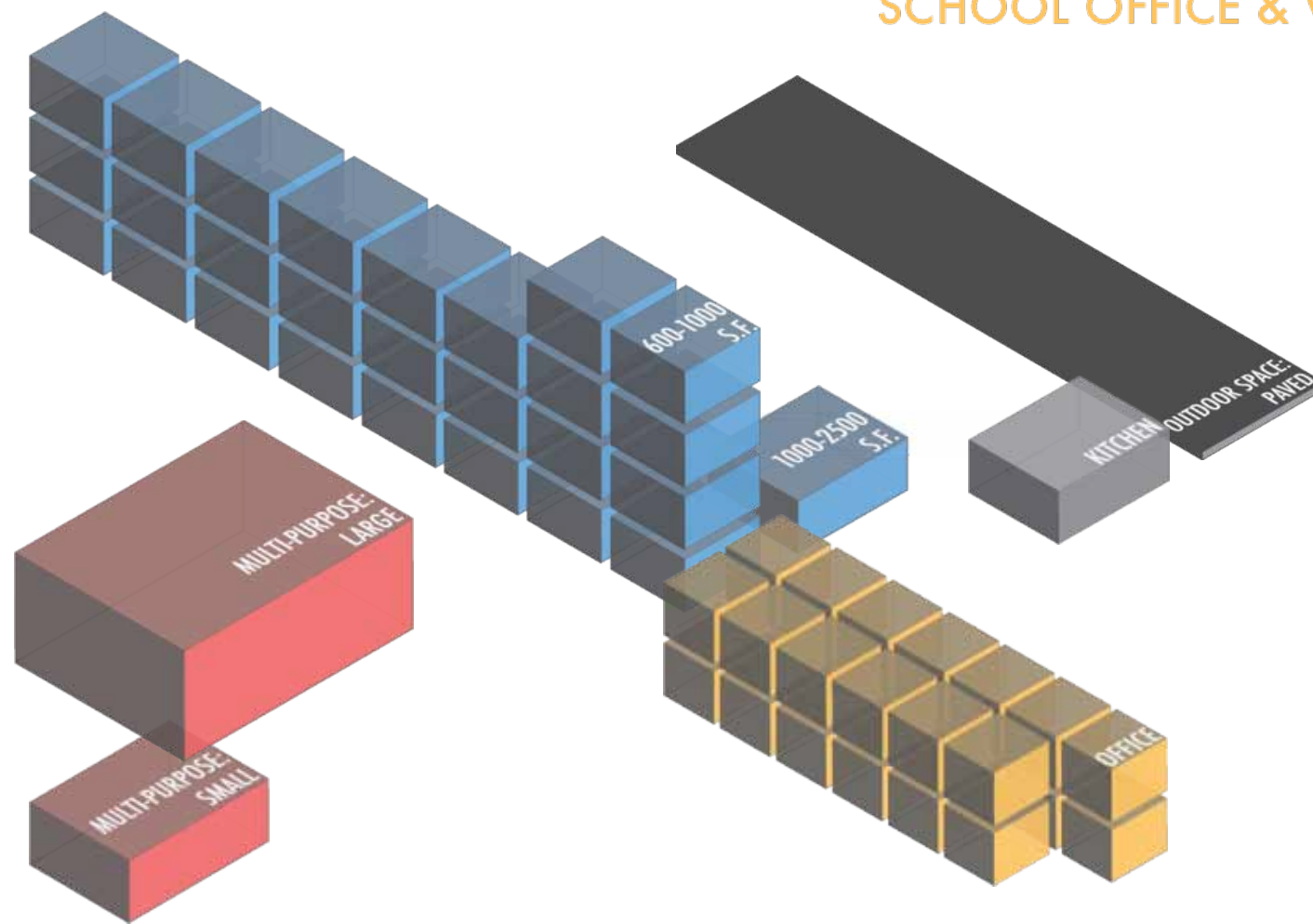
## FACILITIES (Summer 2012)

### LEARNING ENVIRONMENTS

LIBRARY

MULTI-PURPOSE

SCHOOL OFFICE & WORKSPACE



### Summary Counts

	Total	Permanent	Portable
Site Acreage	<b>6.9</b>		
Building Footprint (sf)	<b>44,223</b>		
Building Area (sf)	<b>37,869</b>	15,418	22,451
Classroom-Sized Rooms	<b>27</b>	4	23
	Number of Rooms	Sq Ft	
Library Rooms	<b>0</b>		
Auditorium/Cafeteria/ Multi-purpose/Gym	<b>2</b>	3,337	
Admin/Office/ Conference Room	<b>26</b>	17,304	
School Gardens (None)			
Kitchen	Type: Finishing		
On-site Health Clinic	No		

## SITE SUMMARY (Summer 2012)

### Sports / Recreation

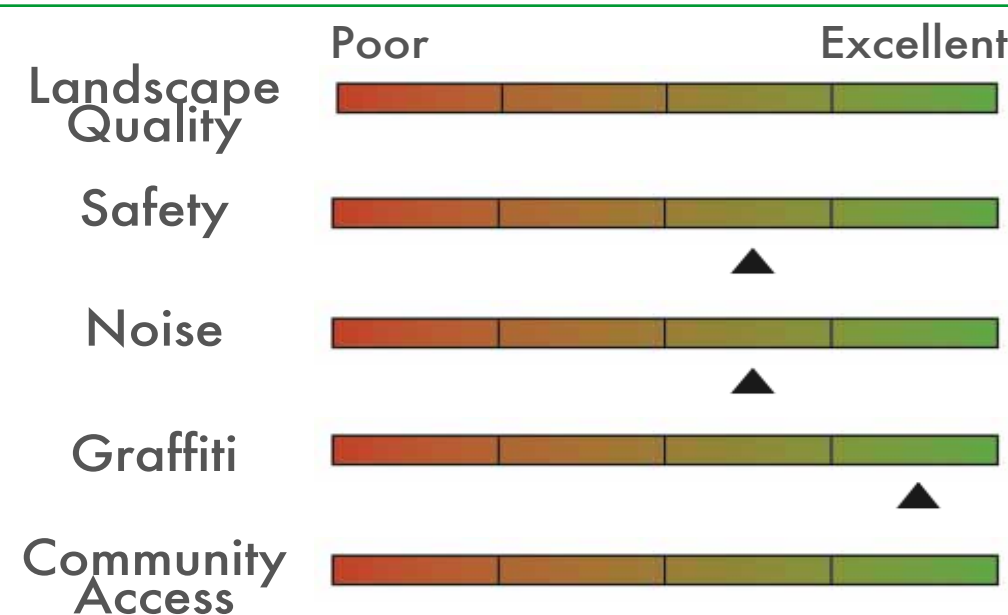
- Play structure ●●
- Basketball hoops ●●●●●●●●
- Swimming pool
- Soccer/football field
- Volleyball court
- Track
- Baseball field
- Tennis court

### Qualitative Assessment

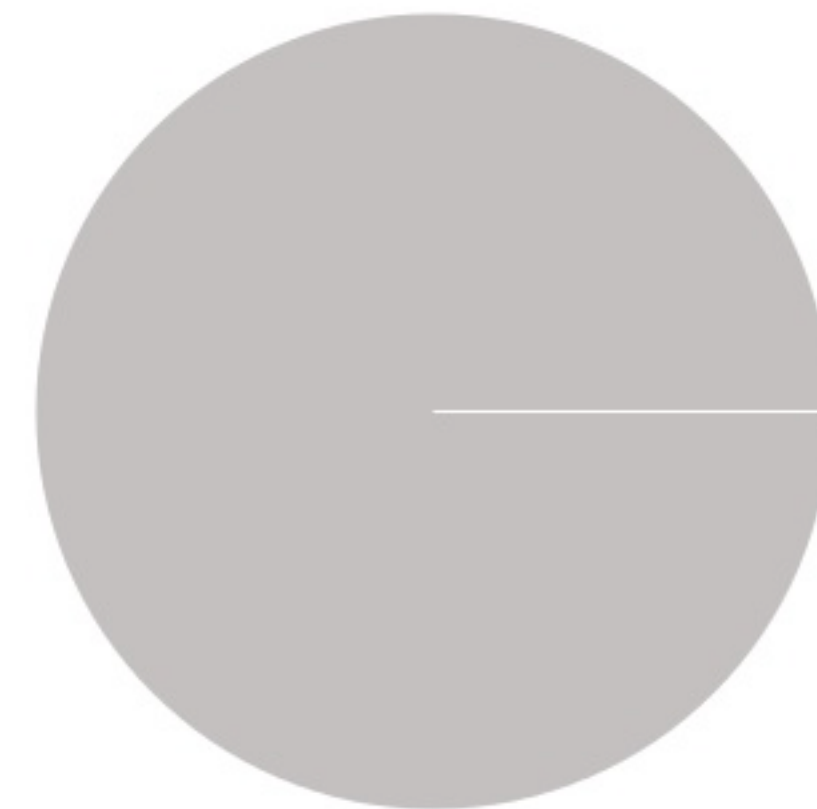
#### Transit Accommodations



100



### Open Space



Paved 100% 0% Green

# John Swett Elementary School

Building Records

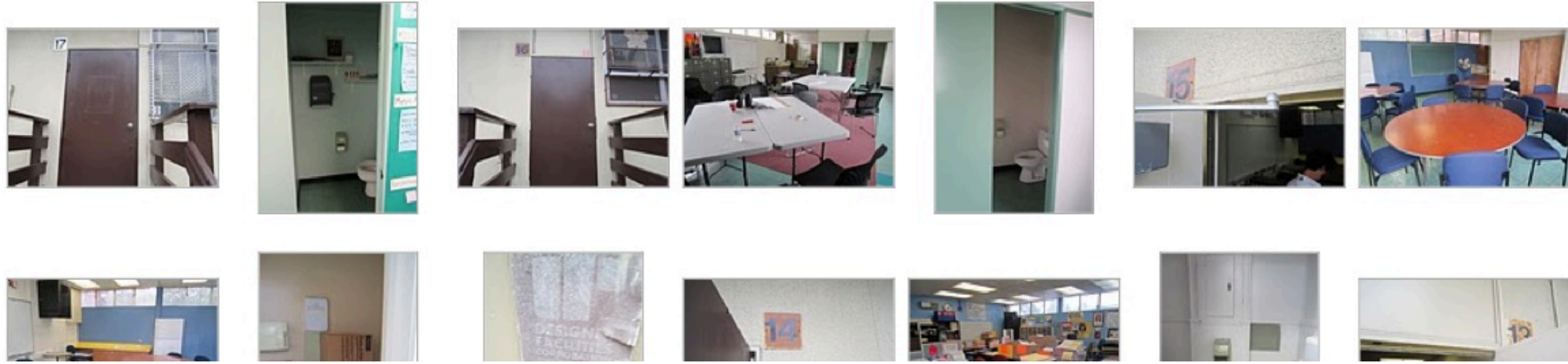
Site ID 156

Region 2

Grades

## Site & Facilities Photos - Summer 2011 (Sample)

\*To view the full set, visit: <http://bitly.com/rXWK1N>



### BUILDING

**A**

BUILDING AREA (SQFT): 15,418

CONSTRUCTED: 1949

#### STRUCTURAL ELEMENTS

##### ROOFING

Diagonal sheathing on joists and wood trusses

##### FOUNDATION

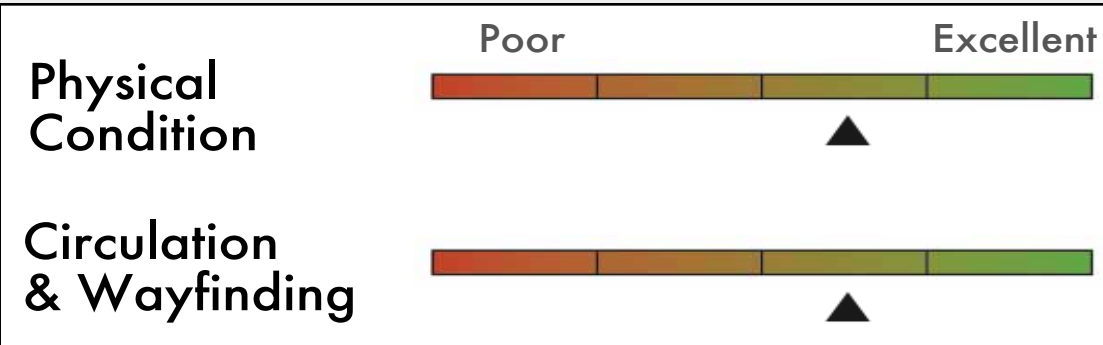
Spread (under int. col.) & Strip (under struct. walls) footings

##### VERTICAL RESISTANCE

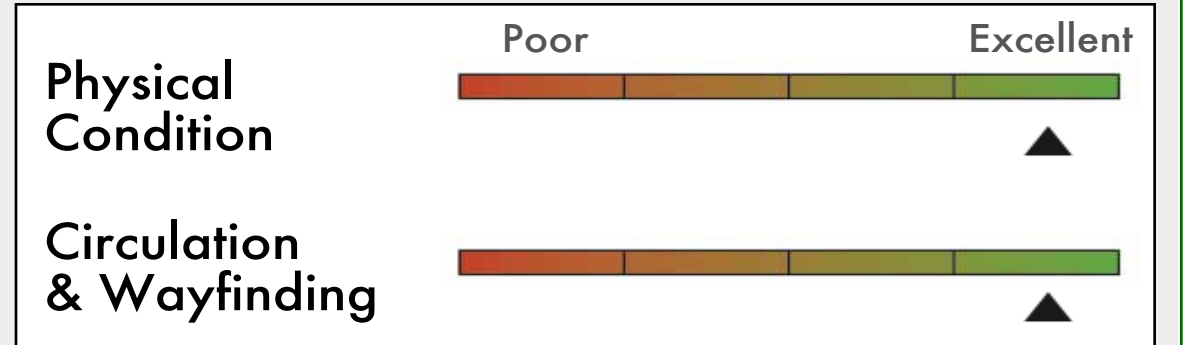
Shear wall - Wood stud walls

#### QUALITATIVE BUILDING ASSESSMENT

##### EXTERIOR



##### INTERIOR



#### ROOM SUMMARY

<u>NO. OF CLASSROOMS</u>	<u>NO. OF OFFICES</u>	<u>NO. OF ADMIN ROOMS</u>	<u>NO. OF RESTROOMS</u>
	4	5	6
<u>NO. OF STUDENT COMPUTERS</u>	<u>NO. OF ADMIN WORKSTATIONS</u>	<u>ADDITIONAL ADMIN SPACES</u>	
	11	Conference Room Teachers' Lounge	

# John Swett Elementary School

Portable Records

Site ID 156

Region 2

Grades

	Manufactured:	<u>NO. OF CLASSROOMS</u>	<u>NO. OF ADMIN ROOMS</u>
PA	1959		1
PB	1962		1
PC	1973		1
PD	1973		1
PE	1977		1
PF	1974		1
PG	2001		1
PH	2001		1
PI	2001		1
PJ	1976		1
PK	2001		
P0	1976		
P1	1976		
P2	1976		
P3	1976		
P4	1976		
P5	1976		
P6	1976		
P7	1976		
P8	1976		2
P9	1976		2
P10	1976		1
P11	1976		
P12	1976		1
P13	1976		
P14	1976		1
P15	1976		
P16	1976		
P17	1976		1

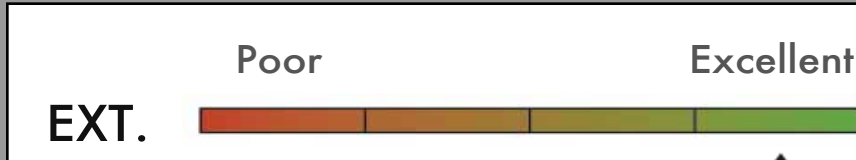
Portable Inventory

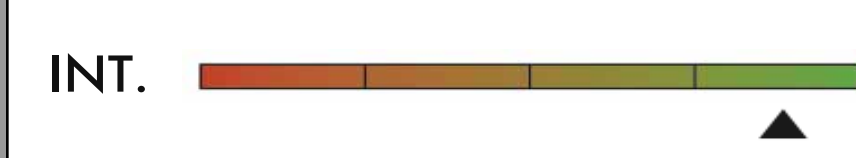
Total Count  
**29**

Average Age  
**34 Years**

Qualitative Conditions Assessment

Poor Excellent

EXT. 

INT. 

# John Swett Elementary School

Rooms Summary & List

Site ID 156

Region 2

Grades

	BLDG LEVEL	ROOM #	ROOM USE	ROOM AREA (SQUARE FOOTAGE)	CLASSROOM COMPUTERS	ADMIN WORKSTATIONS	MARKED ROOM #	ROOM CAPACITY
<b>BUILDING</b>								
		<b>A</b>						
	1	1	Building Utilities	382				
	1	2	Storage	108				
	1	3	Admin/Office	361		1		
	1	4	Restroom	194				
	1	5	Circulation	111				
	1	6	Circulation	109				
	1	7	Storage	286				
	1	8	Building Utilities	108				
	1	9	Restroom	79				
	1	10	Circulation	50				
	1	11	Building Utilities	637				
	1	12	Admin/Office	449		1		
	1	13	Restroom	57				
	1	14	Storage	55				
	1	15	Circulation	835				
	1	16	Building Utilities	25				
	1	17	Building Utilities	25				
	1	18	Storage	35				
	1	19	Storage	61				
	1	20	Multipurpose	809				
	1	21	Multipurpose	2,528				383
	1	22	Restroom	82				
	1	23	Lounge/Staff Dining	233				
	1	24	Circulation	1,636				
	1	25	Circulation	482				
	1	26	Conference Room	949		2	9	
	1	27	Conference Room	959			8	
	1	28	Circulation	39				
	1	29	Circulation	482				
	1	30	Admin/Office	949		4	10	
	1	31	Storage	133				
	1	32	Restroom	95				
	1	33	Building Utilities	20				
	1	34	Storage	44				
	1	35	Admin/Office	1,058		3	11	
	1	36	Admin/Office	247				
	1	37	Storage	28				
	1	38	Building Utilities	39				
	1	39	Building Utilities	73				
	1	40	Storage	123				
	1	41	Restroom	204				
	1	42	Circulation	32				
	1	43	Circulation	32				
	1	44	Circulation	132				
	1	45	Circulation	43				
<b>PORTABLE</b>								
		<b>P0</b>						
				900				
<b>PORTABLE</b>								
		<b>P1</b>						
				900				
<b>PORTABLE</b>								
		<b>P10</b>						
	1		Admin/Office	770		24		
	2		Restroom	42				

		BLDG LEVEL	ROOM #	ROOM USE	ROOM AREA (SQUARE FOOTAGE)	CLASSROOM COMPUTERS	ADMIN WORKSTATIONS	MARKED ROOM #	ROOM CAPACITY
<b>PORTABLE</b>	<b>P11</b>								
			1	Storage	660				
<b>PORTABLE</b>	<b>P12</b>								
			1	Admin/Office	768		5	1	
			1a	Restroom	21			1	
<b>PORTABLE</b>	<b>P13</b>								
			1	Storage	696			1	
			1a	Restroom	21			1	
<b>PORTABLE</b>	<b>P14</b>								
			1	Admin/Office	576		2	1	
			1a	Restroom	16			1	
<b>PORTABLE</b>	<b>P15</b>								
			1	Lounge/Staff Dining	576			1	
			1a	Restroom	16			1	
<b>PORTABLE</b>	<b>P16</b>								
			1	Conference Room	792			1	
			1a	Restroom	16			1	
<b>PORTABLE</b>	<b>P17</b>								
			1	Admin/Office	576		3	1	
			1a	Restroom	16			1	
<b>PORTABLE</b>	<b>P2</b>								
			1		900				
<b>PORTABLE</b>	<b>P3</b>								
			1		900				
<b>PORTABLE</b>	<b>P4</b>								
			1		900				
<b>PORTABLE</b>	<b>P5</b>								
			1		900				
<b>PORTABLE</b>	<b>P6</b>								
			1		900				
<b>PORTABLE</b>	<b>P7</b>								
			1		900				
			1		900				
<b>PORTABLE</b>	<b>P8</b>								
			1	Admin/Office	483		2		
			2	Restroom	53				
			3	Admin/Office	242		1		
<b>PORTABLE</b>	<b>P9</b>								
			1	Admin/Office	462		2		
			2	Storage	54				
			3	Building Utilities	20				
			4	Restroom	35				
			5	Admin/Office	240		1		

		BLDG LEVEL	ROOM #	ROOM USE	ROOM AREA (SQUARE FOOTAGE)	CLASSROOM COMPUTERS	ADMIN WORKSTATIONS	MARKED ROOM #	ROOM CAPACITY
<b>PORTABLE</b>	<b>PA</b>								
			1	Admin/Office	784		5		
<b>PORTABLE</b>	<b>PB</b>								
			1	Admin/Office	739		8		
			2	Restroom	45				
<b>PORTABLE</b>	<b>PC</b>								
			1	Admin/Office	736		9		
<b>PORTABLE</b>	<b>PD</b>								
			1	Admin/Office	736				
<b>PORTABLE</b>	<b>PE</b>								
			1	Admin/Office	736		5		
<b>PORTABLE</b>	<b>PF</b>								
			1	Admin/Office	736		5		
<b>PORTABLE</b>	<b>PG</b>								
			1	Admin/Office	736		4		
<b>PORTABLE</b>	<b>PH</b>								
			1	Admin/Office	736		2		
<b>PORTABLE</b>	<b>PI</b>								
			1	Admin/Office	736		1		
<b>PORTABLE</b>	<b>PJ</b>								
			1	Admin/Office	748		2		
			2	Building Utilities	60				
			3	Restroom	121				
			4	Restroom	121				
			5	Storage	66				
<b>PORTABLE</b>	<b>PK</b>								
			1	Restroom	88				
			2	Restroom	88				
			3	Restroom	88				